

MAGAIN



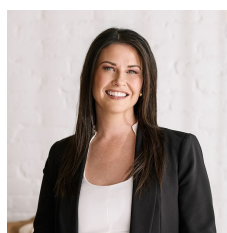
10 Locomotive Drive SHEIDOW PARK SA

4 🛏 2 🚿 2 🚗

Please contact Danielle Comer or Rachael Farror for viewing times.

Representing an outstanding opportunity for the large family looking for nothing to do but move straight in, you will be sure to put this fantastic Sheidow Park home at the very top of your list! Located on a quiet street amongst quality homes and set on an elevated 595 square metre corner allotment that showcases panoramic views right from the doorstep, it has the bonus of being a short walk from the fantastic Southbank Boulevard Reserve and conveniently located only a few minutes drive to popular schooling options including Woodend Primary School and the Hallett Cove Shopping Precinct.

Type : House
Building Size : 25 sqm
Land Size : 595 sqm
View : <https://www.magain.com.au/property/10-locomotive-drive-sheidow-park-sa/8431996>

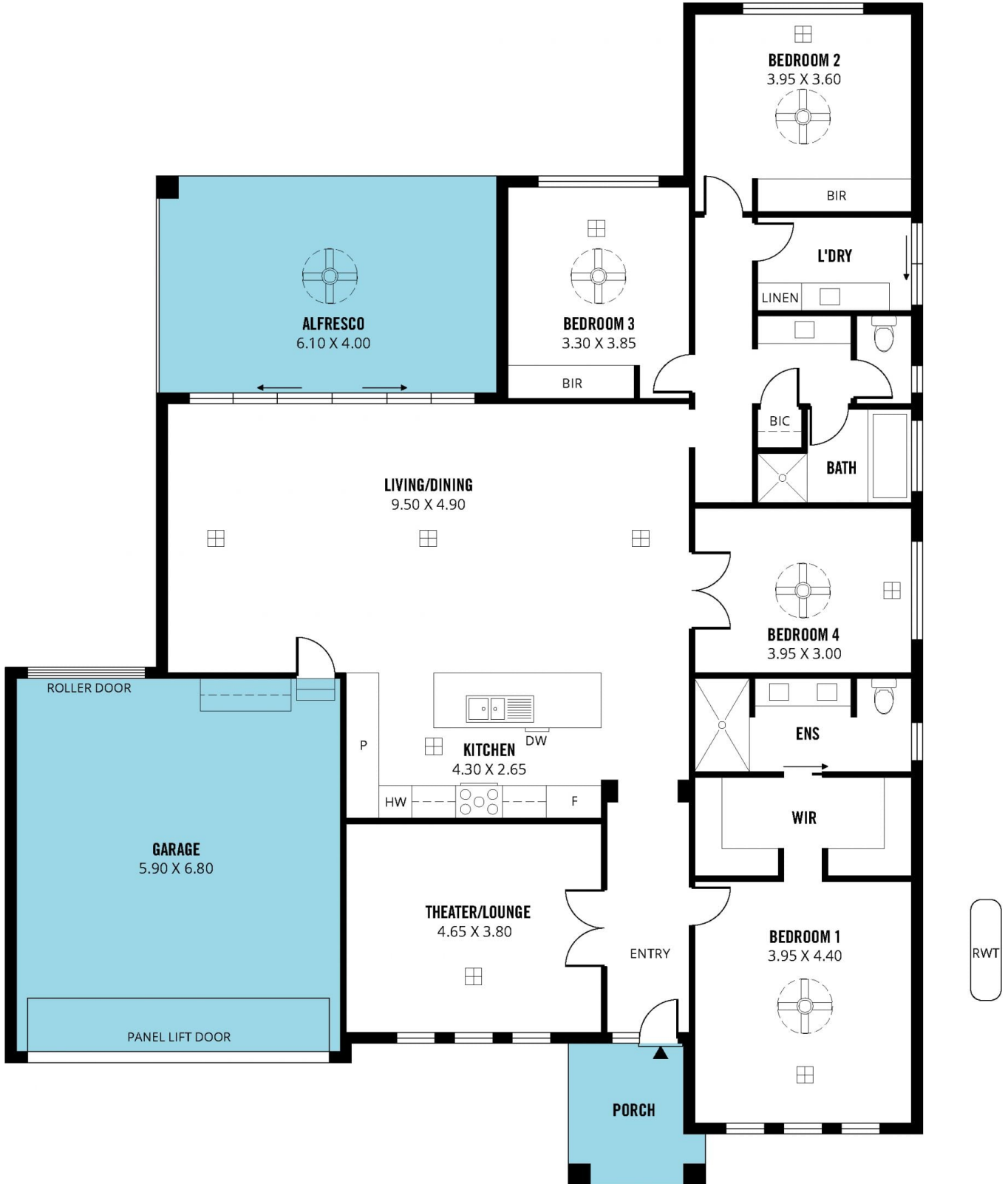
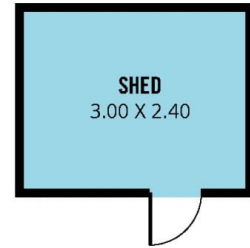
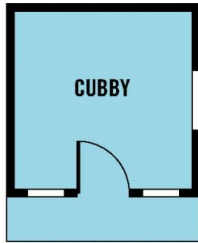


Danielle Comer
08 8322 6111

[For full version visit the website](https://www.magain.com.au)

<https://www.magain.com.au>
Magain Real Estate

Shop 3, Happy Valley Shopping Centre, 50 Kenihans H
08 8322 6111



Scale in metres. This drawing is for illustration purposes only. All measurements are approximate and details intended to be relied upon should be independently verified.

Produced by **The Fotobase Group**