

MAGAIN



8 Cabin Street SHEIDOW PARK SA

4 2 2

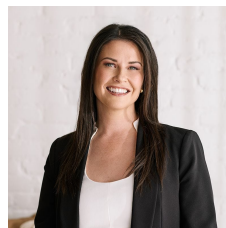
Please contact Danielle Comer or Rachael Farror for viewing times.

Representing an outstanding opportunity for the large family or a savvy investor, you will be sure to put this fantastic Sheidow Park home at the very top of your list! Located on a quiet tree lined street amongst quality homes and set on an easily maintainable 480 square metre allotment, it has the bonus of being a short walk from the fantastic Southbank Boulevard Reserve and conveniently located only a few minutes drive to popular schooling options including Woodend Primary School and the Hallett Cove Shopping Precinct.

Upon entry you will be swept away by the feeling of

[For full version visit the website](https://www.magain.com.au/property/8-cabin-street-sheidow-park-sa/8432050)

Type : House
Building Size : 21 sqm
Land Size : 480 sqm
View : <https://www.magain.com.au/property/8-cabin-street-sheidow-park-sa/8432050>



Danielle Comer
08 8322 6111



Scale in metres. This drawing is for illustration purposes only. All measurements are approximate and details intended to be relied upon should be independently verified. Produced by **The Fotobase Group**