

# MAGAIN



## 16 Conington Crescent MORPHETT VALE SA

3 1 2

Please contact Danielle Comer or Rachael Farror to schedule a viewing.

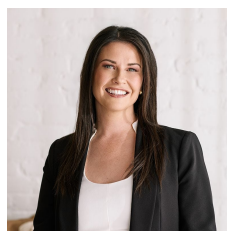
Currently tenanted for \$350 per week until 19/4/2022.

Surrounded by lovely homes in the popular suburb of Morphett Vale, this three bedroom family home is just a short stroll to the Sapphire Road Reserve and close to local schools, shops and public transport options, representing an outstanding opportunity for first home buyers and investors looking for great rental returns.

A spacious formal lounge laden with beautiful timber flooring welcomes you at the front of the home and flows through to the neutral toned kitchen overlooking the family

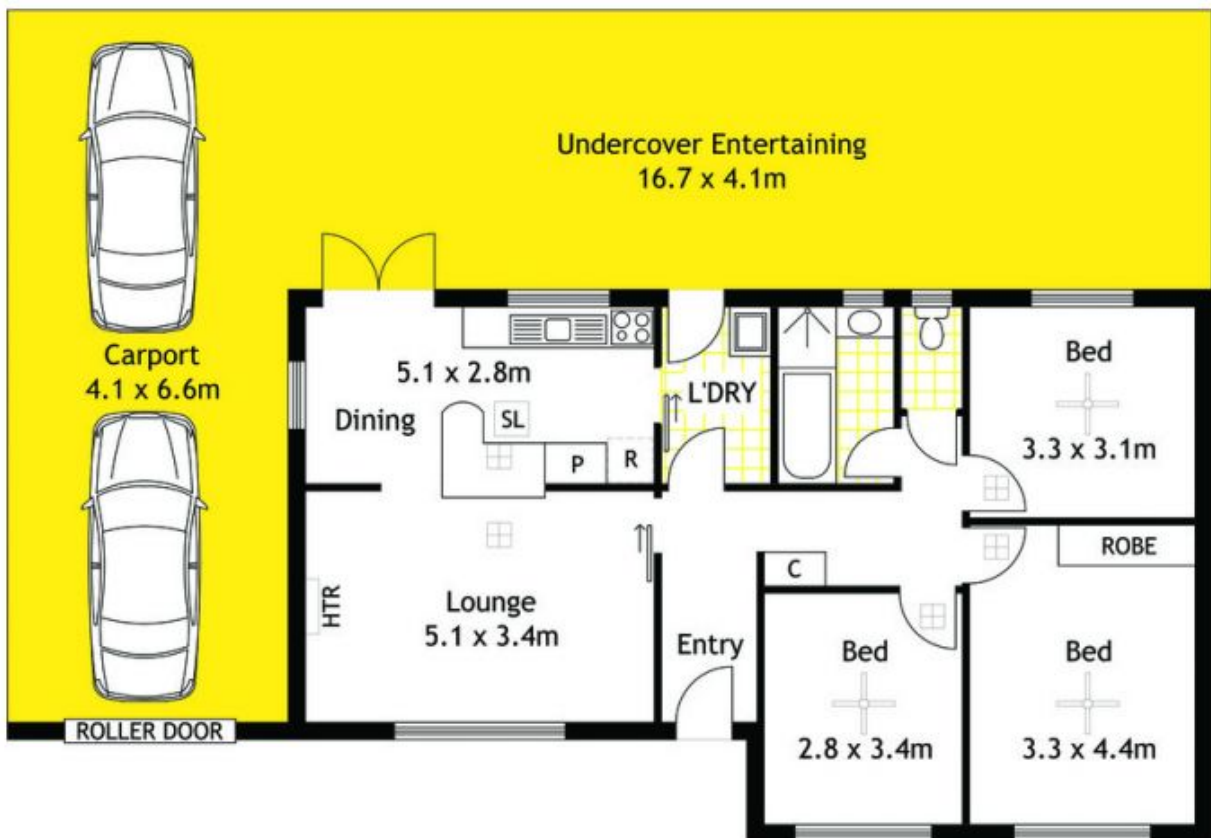
[For full version visit the website](https://www.magain.com.au/property/16-conington-crescent-morphett-vale-sa/8432094)

**Type** : House  
**Building Size** : 10 sqm  
**Land Size** : 790 sqm  
**View** : <https://www.magain.com.au/property/16-conington-crescent-morphett-vale-sa/8432094>



**Danielle Comer**  
08 8322 6111

Shed  
2.9 x 2.9m  
NOT IN POSITION



Scale in metres. Indicative only. Dimensions are approximate. All information contained herein is gathered from sources we believe to be reliable. However, we cannot guarantee it's accuracy and interested persons should rely on their own enquiry.

16 Conington Crescent, Morphett Vale