

# MAGAIN



## 75 Lander Road SHEIDOW PARK SA

3  1  1 

Please phone Danielle Comer or Rachael Farror for viewing times.

A clever floor plan begins with a welcoming entrance, where beautiful floating timber floors, LED downlights plus a neutral palette bathed in natural light welcomes you with open arms.

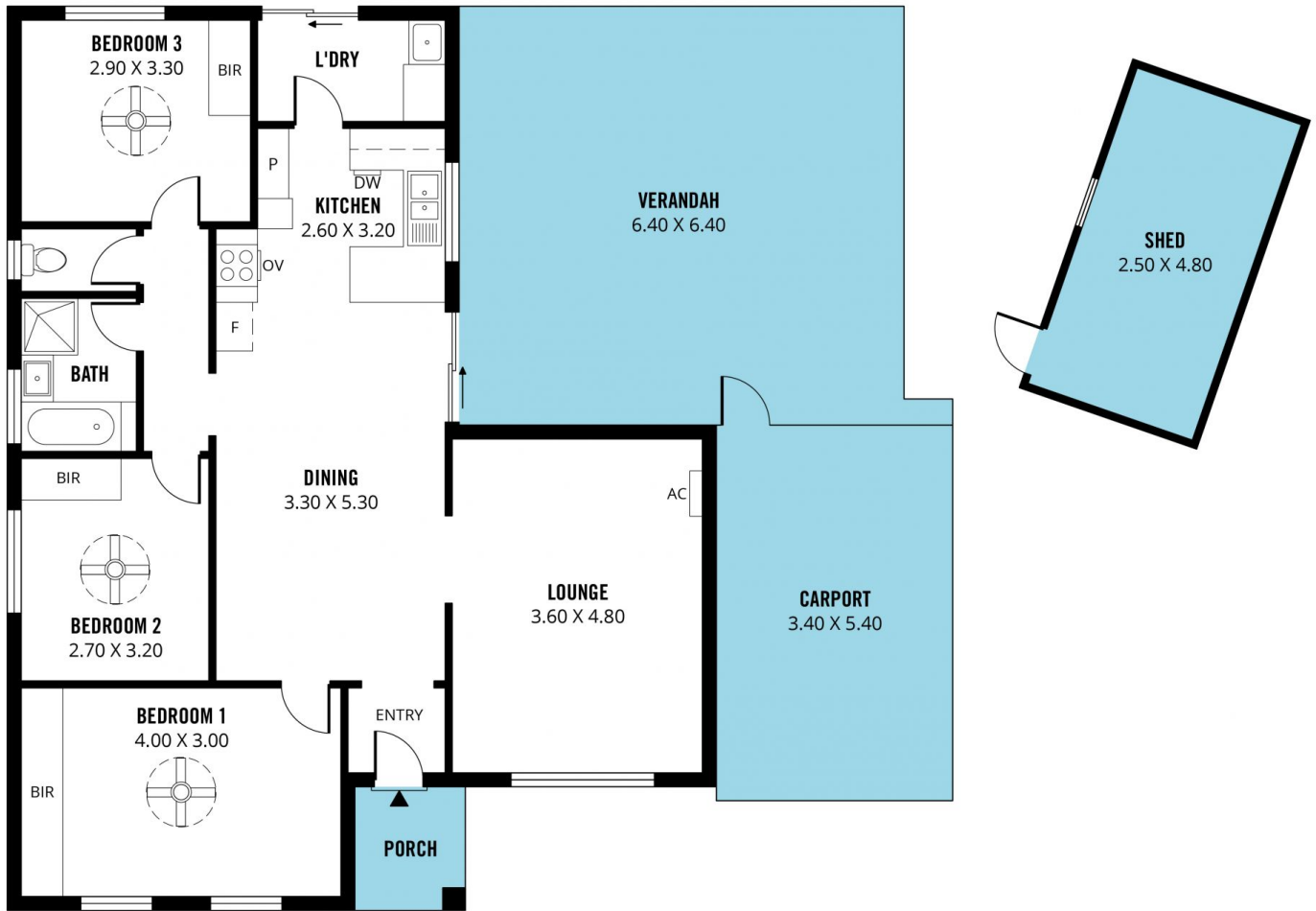
It will be love at first sight for those who hold the kitchen as the heart of the home. Overlooking the home's casual meals and adjacent to the formal lounge, it has been beautifully renovated with modern benchtops, subway tiles and quality appliances including a dishwasher and gas cook top plus a well appointed breakfast bar that creates the perfect gathering spot while entertaining and also

[For full version visit the website](https://www.magain.com.au/property/75-lander-road-sheidow-park-sa/8432096)

**Type** : House  
**Building Size** : 12 sqm  
**Land Size** : 630 sqm  
**View** : <https://www.magain.com.au/property/75-lander-road-sheidow-park-sa/8432096>



**Danielle Comer**  
08 8322 6111



Scale in metres. This drawing is for illustration purposes only. All measurements are approximate and details intended to be relied upon should be independently verified.

Produced by **The Fotobase Group**