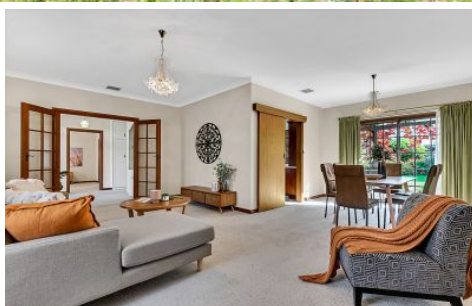


MAGAIN



13 Verdelho Way WARRADALE SA

3 2 2

Please contact Danielle Comer and Rachael Farror for viewing times.

Situated on a large 701sqm block amongst quality homes in Warradale's prestigious Hamilton Estate, this spacious three bedroom home presents approximately 195sqm of living space. Featuring decorative cornices, double brick and a versatile floor plan all ready for you to put your own stamp on it, it is perfect for the growing family while being close to popular public and private schooling options such as Warradale Primary, Westminster College and Sacred Heart College.

Welcoming you upon entry is a neat foyer leading you through stunning timber french doors to an L-shape lounge

[For full version visit the website](#)

Type : House
Building Size : 21 sqm
Land Size : 701 sqm
View : <https://www.magain.com.au/property/13-verdelho-way-warradale-sa/8432102>



Danielle Comer
08 8322 6111



Scale in metres. This drawing is for illustration purposes only. All measurements are approximate and details intended to be relied upon should be independently verified.

Produced by **The Fotobase Group**