

MAGAIN



23 Tania Drive ABERFOYLE PARK SA

4 2 1

Please contact Danielle Comer or Rachael Farror to schedule a viewing time.

Set amongst the picturesque rolling hills of Aberfoyle Park on a generous 750 square metre allotment (approx.), this tastefully renovated family home has a cleverly designed floorplan that will suit the growing family throughout the years. Prepare to be dazzled by the indoor-outdoor family living spaces, blissfully configured to entertain in style, where entertaining outside will make your home 'the place to be'.

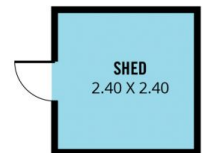
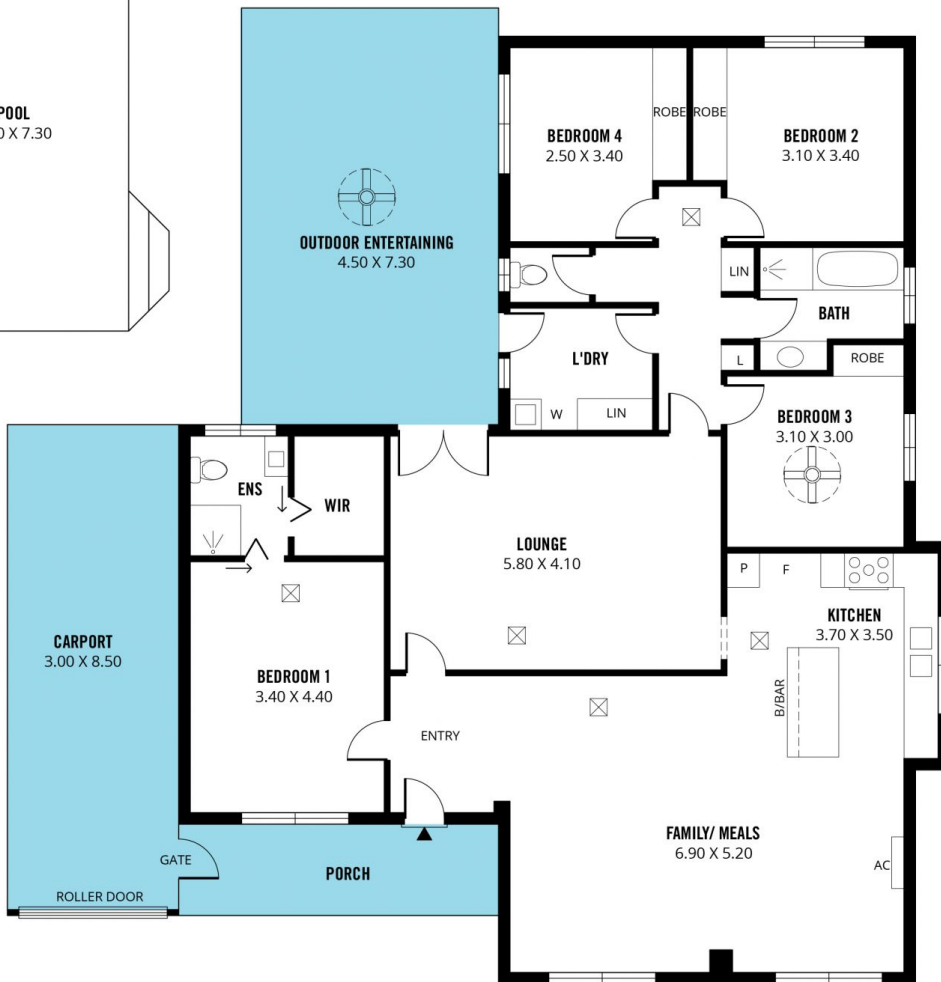
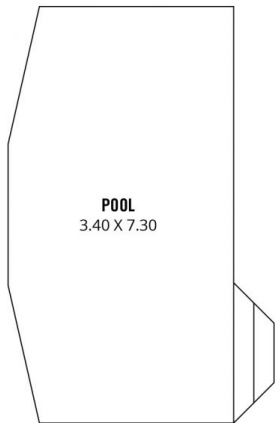
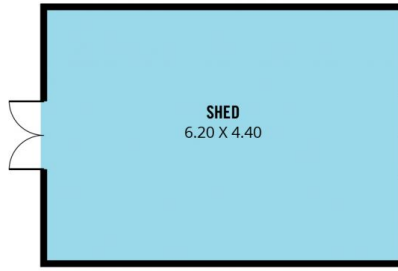
Surrounded by an abundance of local schools and all the amenities you could ever need, it's a great opportunity for investors and those wishing to move into this highly

[For full version visit the website](https://www.magain.com.au/property/23-tania-drive-aberfoyle-park-sa/8432105)

Type : House
Building Size : 19 sqm
Land Size : 750 sqm
View : <https://www.magain.com.au/property/23-tania-drive-aberfoyle-park-sa/8432105>



Danielle Comer
08 8322 6111



Scale in metres. This drawing is for illustration purposes only. All measurements are approximate and details intended to be relied upon should be independently verified.

Produced by **The Fotobase Group**