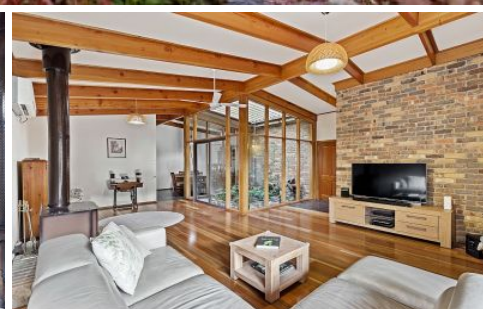


MAGAIN



654 Cherry Gardens Road CHERRY GARDENS SA

3 2 4

Please contact Karen Heuer for further details.

Privately set back from the road on approximately 2440 sqm, this home is sure to impress! The solid brick home features a versatile floor plan for all to enjoy.

The circular driveway allows easy access for family and friends coming or going. As an added bonus, drive through access is possible through the carport to store a caravan or trailer or for the ultimate convenience, choose to make use of the rear road access.

An abundance of natural light flows throughout the home. The generous sized main bedroom and ensuite is to the front of the home, overlooking the front garden, capturing calming leafy views.

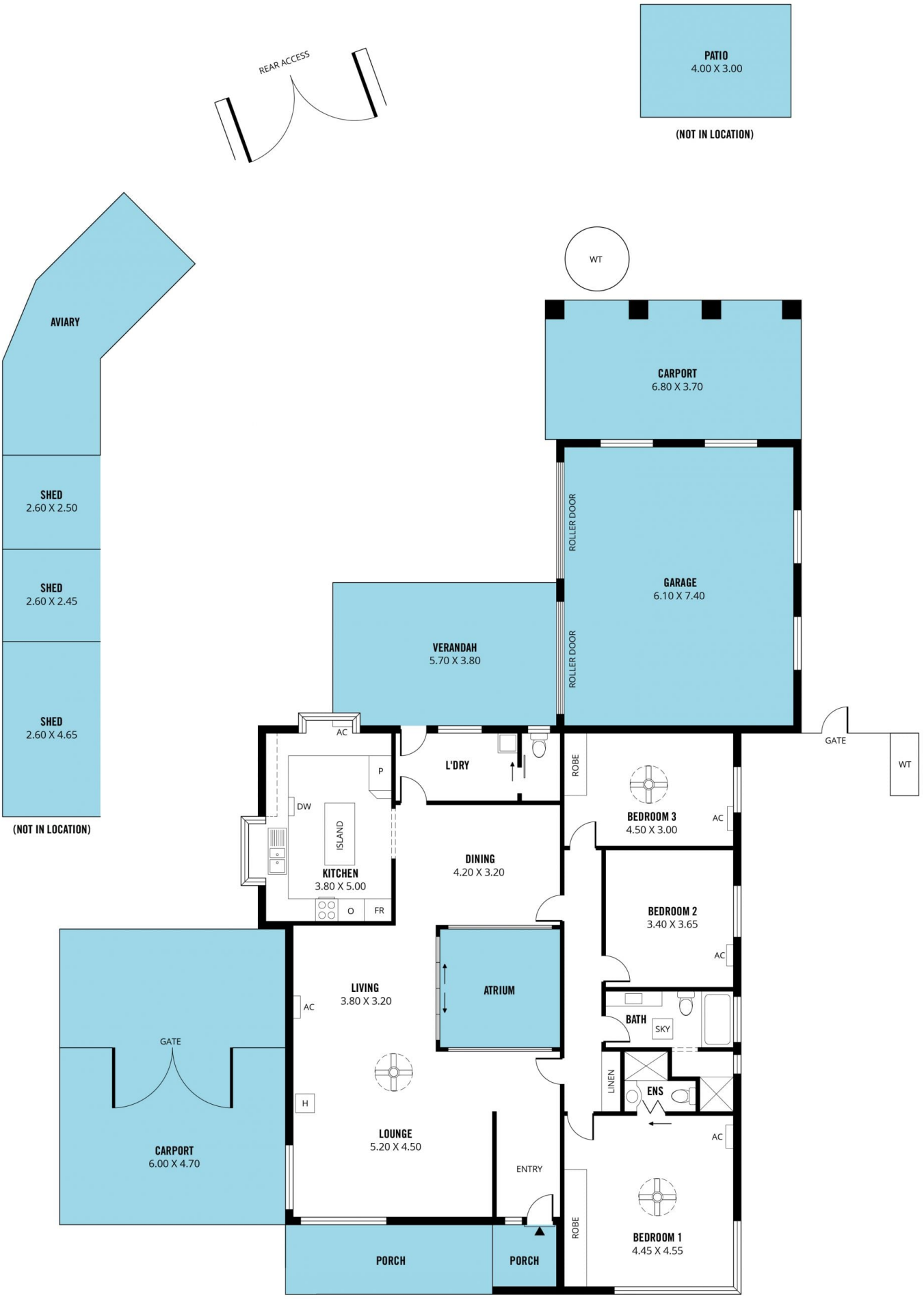
Moving through the home you will find beautiful timber floors in the open plan living area complete with

[For full version visit the website](https://www.magain.com.au)

Type : House
Building Size : 24 sqm
Land Size : 2440 sqm
View : <https://www.magain.com.au/property/654-cherry-gardens-road-cherry-gardens-sa/8432116>



Karen Heuer
08 8381 6000



Scale in metres. This drawing is for illustration purposes only. All measurements are approximate and details intended to be relied upon should be independently verified.

Produced by **The Fotobase Group**