

MAGAIN



43A Malone Street MORPHETT VALE SA

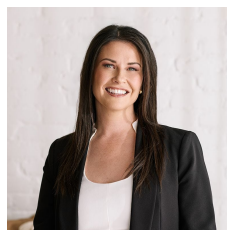
3 2 1

Please phone Danielle Comer or Rachael Farror for viewing times.

Surrounded by quality homes on a low maintenance 300sqm allotment and with stunning curb-side appeal, this beautiful family home built in 2016 leaves nothing to do but move straight in. With the fantastic Wilfred Taylor Reserve only a few minutes walk away as well as being located close to popular local schools, shops and public transport options, it's a fantastic opportunity for investors and those wishing to move into this popular lifestyle location.

Upon entry to the home you're welcomed by a lovely wide hallway which flows seamlessly past the bedrooms and through to an open plan family living, dining and kitchen

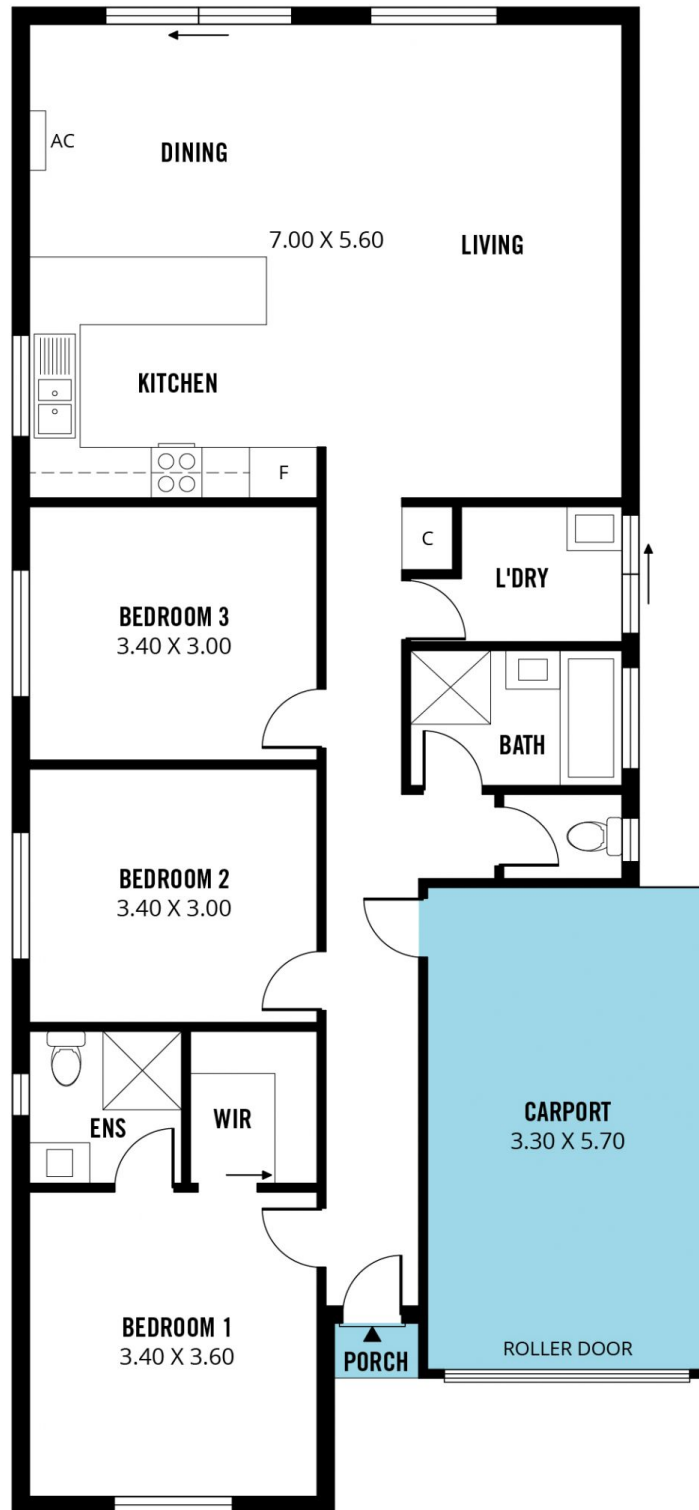
Type : House
Land Size : 300 sqm
View : <https://www.magain.com.au/property/43a-malone-street-morphett-vale-sa/8432120>



Danielle Comer
08 8322 6111

[For full version visit the website](https://www.magain.com.au)

RWT



Scale in metres. This drawing is for illustration purposes only. All measurements are approximate and details intended to be relied upon should be independently verified.

Produced by **The Fotobase Group**