

MAGAIN



5/25 Berrima Road SHEIDOW PARK SA

3 2 1

Please contact Danielle Comer or Rachael Farror for viewing times.

Built in 2017 and showcasing a sophisticated design throughout, this contemporary townhouse is located amongst a quiet community titled group and makes great use of the space provided. With open plan living, three bedrooms, a rare 'plus sized' rear yard and a single carport, this special townhouse truly represents an outstanding home or investment in an unbeatable beachside residential pocket, close to everything you could need including local schools, shops and public transport options.

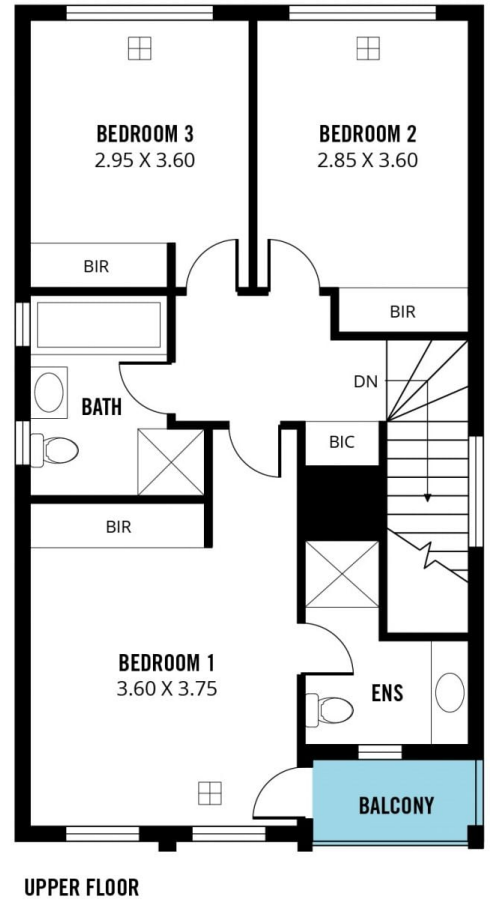
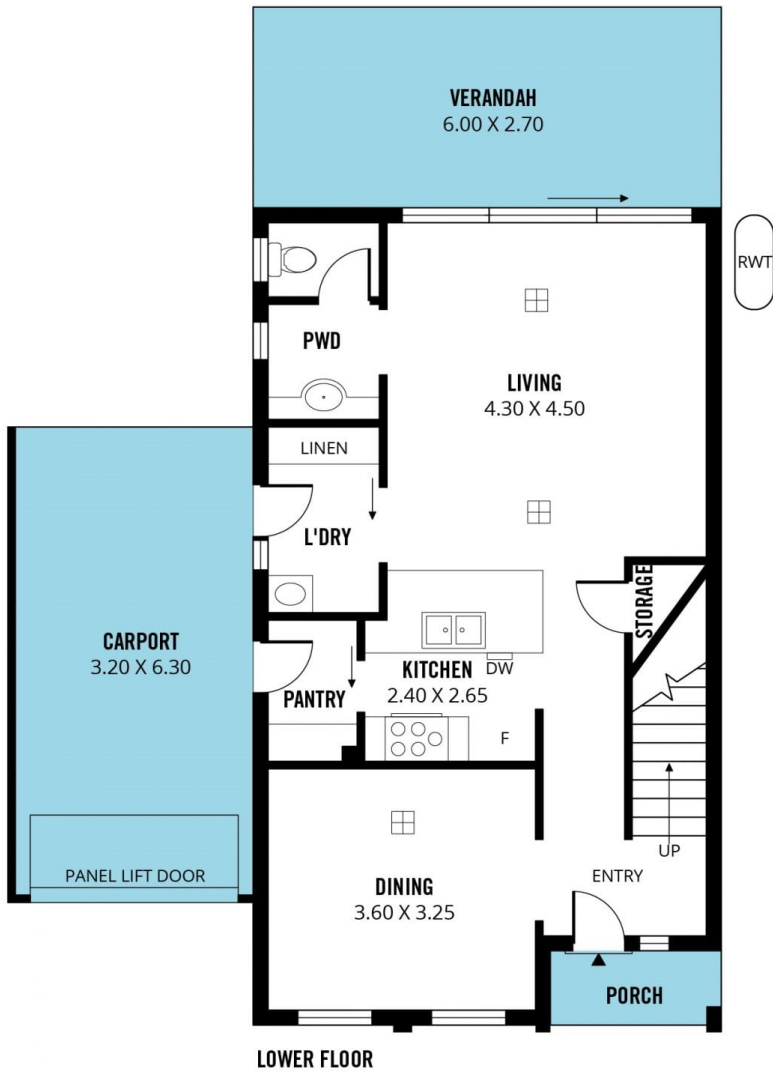
A clever floorplan designed to maximise space begins on the lower level with a neat entrance that flows past a formal

[For full version visit the website](https://www.magain.com.au/property/52-5-berrima-road-sheidow-park-sa/8432125)

Type : House
Building Size : 16 sqm
Land Size : 288 sqm
View : <https://www.magain.com.au/property/52-5-berrima-road-sheidow-park-sa/8432125>



Danielle Comer
08 8322 6111



Scale in metres. This drawing is for illustration purposes only. All measurements are approximate and details intended to be relied upon should be independently verified.

Produced by **The Fotobase Group**