

MAGAIN



9 Merriwa Road Sheidow Park SA

4 2 2

Please contact Danielle Comer or Rachael Farror for viewing times.

Situated amongst the beautiful tree lined streets of Sheidow Park on an easily maintainable 584sqm (approx) allotment, this impressive four bedroom (plus study) family home with delightful curb-side appeal is located on a quiet street close to popular local schools, shops and public transport options, truly representing an outstanding opportunity for the growing family or a savvy investor.

Upon entry you are welcomed by a lovely wide entrance hall which opens up into a spacious formal lounge with cozy gas heater keeping you warm on those cold winter nights, through to the modern kitchen overlooking a casual

[For full version visit the website](https://www.magain.com.au/property/9-merriwa-road-sheidow-park-sa/8432278)

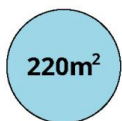
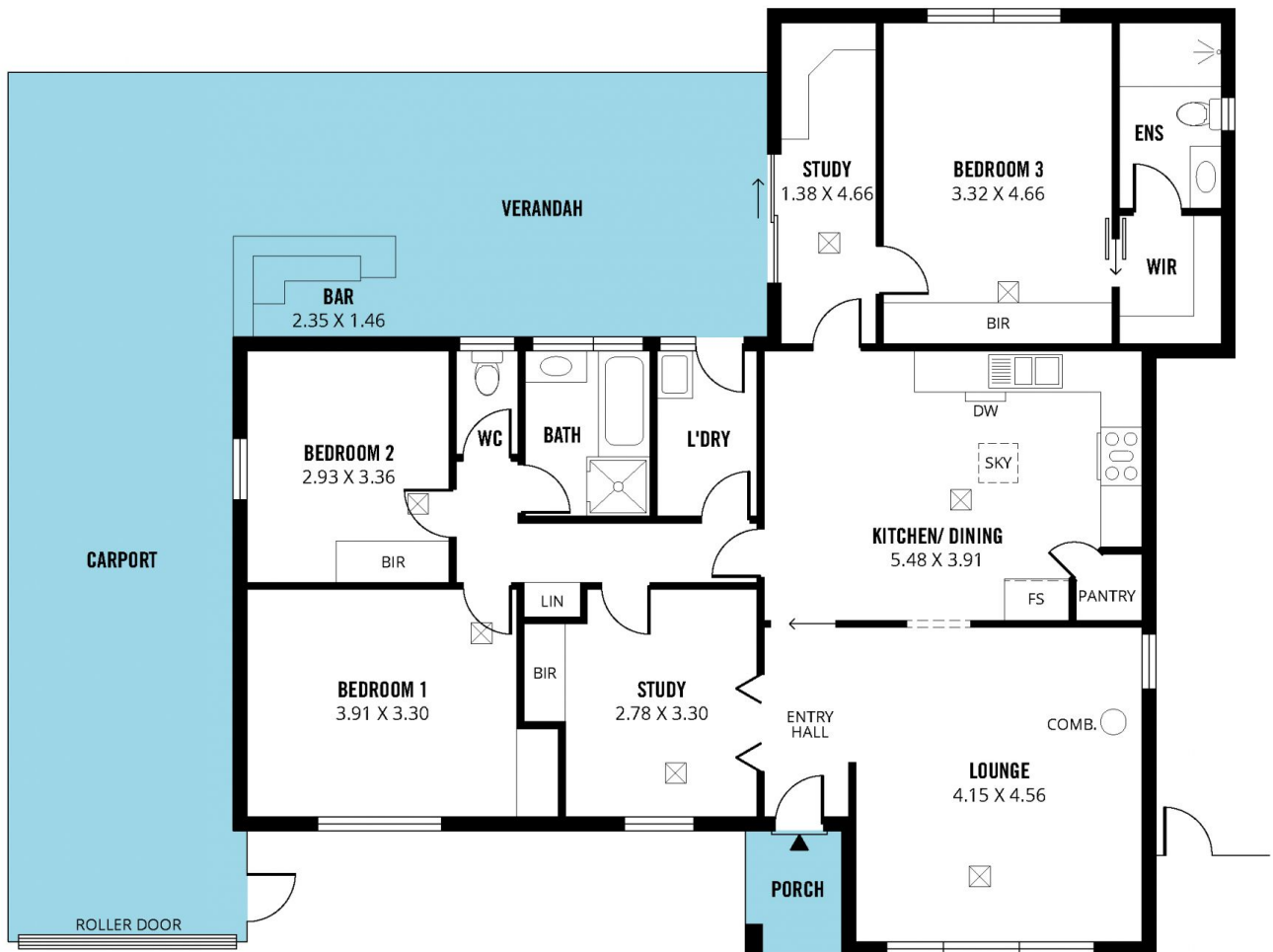
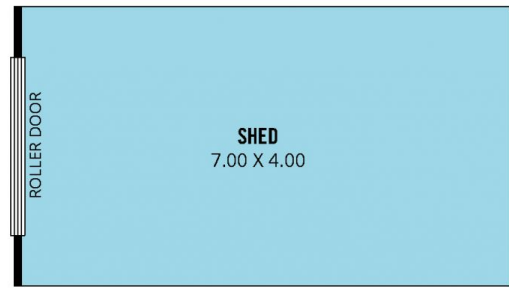
Type : House
Price : \$ 680,000
Building Size : 123 sqm
Land Size : 584 sqm
View : <https://www.magain.com.au/property/9-merriwa-road-sheidow-park-sa/8432278>



Danielle Comer
08 8322 6111



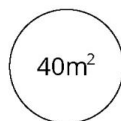
Rachael Farror
0401 097 442



TOTAL



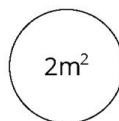
Living



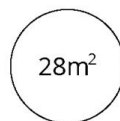
Carport



Verandah



Porch



Shed



Scale in metres. This drawing is for illustration purposes only. All measurements are approximate and details intended to be relied upon should be independently verified.

Produced by **The Fotobase Group**