

MAGAIN



6 Sarah Court Sheidow Park SA

3 2 2

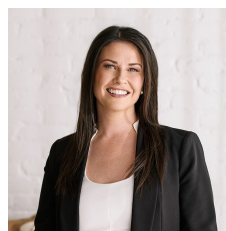
Please contact Danielle Comer or Rachael Farror for viewing times.

Representing an outstanding opportunity for the growing family or a savvy investor, you will be sure to put this fantastic Sheidow Park home at the very top of your list! Located on a quiet street amongst quality homes and set on an easily maintainable 659 square metre allotment, it is conveniently located only a few minutes drive to popular schooling options including Woodend Primary School and the Hallett Cove Shopping Precinct.

Upon entry you will be swept away by the feeling of spacious and luxurious living throughout, a lovely wide hallway flows past a formal lounge laden with cozy carpets

[For full version visit the website](https://www.magain.com.au/property/6-sarah-court-sheidow-park-sa/8432279)

Type : House
Price : \$ 727,549
Building Size : 173 sqm
Land Size : 659 sqm
View : <https://www.magain.com.au/property/6-sarah-court-sheidow-park-sa/8432279>



Danielle Comer
08 8322 6111

<https://www.magain.com.au>
Magain Real Estate

Shop 3, Happy Valley Shopping Centre, 50 Kenihans H
08 8322 6111



Scale in metres. This drawing is for illustration purposes only. All measurements are approximate and details intended to be relied upon should be independently verified.

Produced by **The Fotobase Group**