

MAGAIN



18 Chifley Crescent Trott Park SA

4 🛏 2 🚿 2 🚗

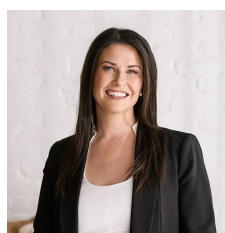
Please contact Danielle Comer or Rachael Farror for viewing times.

Positioned on a generous 920sqm parcel of land on the high side of this beautiful tree line cul-de-sac is this large north facing family residence presenting over 200sqm of internal living. A commanding street presence and sensibly built to make use of the natural curves of the land. Its cleverly designed floorplan is generously proportioned throughout with an abundance of storage and has a flexibility that will suit your family throughout the years.

Delivering contemporary living at its very best. Welcoming you at the front of the home is a lovely wide entryway that flows past a formal lounge and dining with large windows

[For full version visit the website](https://www.magain.com.au/property/18-chifley-crescent-trott-park-sa/8432314)

Type : House
Price : \$ 755,000
Building Size : 202 sqm
Land Size : 920 sqm
View : <https://www.magain.com.au/property/18-chifley-crescent-trott-park-sa/8432314>



Danielle Comer
08 8322 6111



Rachael Farror
0401 097 442

<https://www.magain.com.au>
Magain Real Estate

Shop 3, Happy Valley Shopping Centre, 50 Kenihans H
08 8322 6111



Scale in metres. This drawing is for illustration purposes only. All measurements are approximate and details intended to be relied upon should be independently verified.

Produced by **The Fotobase Group**