

MAGAIN



3 George Francis Drive Mount Compass SA

4 2 4

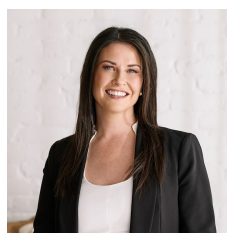
Please contact Danielle Comer or Rachael Farror for all your property advice.

Situated on a great-sized 885sqm allotment, and perfectly positioned to take advantage of the panoramic views across the Mount Compass Golf Course, this spacious family home with approximately 300sqm of internal living has been sensibly built to make great use of the natural curves of the land. Seriously impressive, this two-story home offers a neutral palette, stunning timber flooring, and plenty of windows to let in an abundance of natural light allowing that connection to the outside world - it really needs to be seen to be believed!

Upon entrance to the home you are welcomed by a neat

[For full version visit the website](https://www.magain.com.au)

Type : House
Price : \$ 800,000
Building Size : 300 sqm
Land Size : 885 sqm
View : <https://www.magain.com.au/property/3-george-francis-drive-mount-compass-sa/8432389>



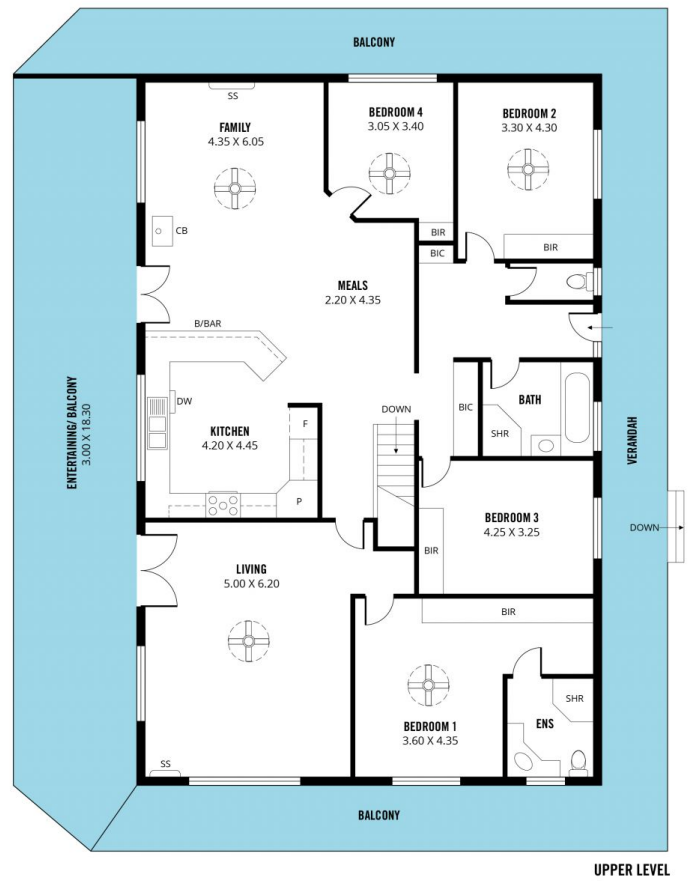
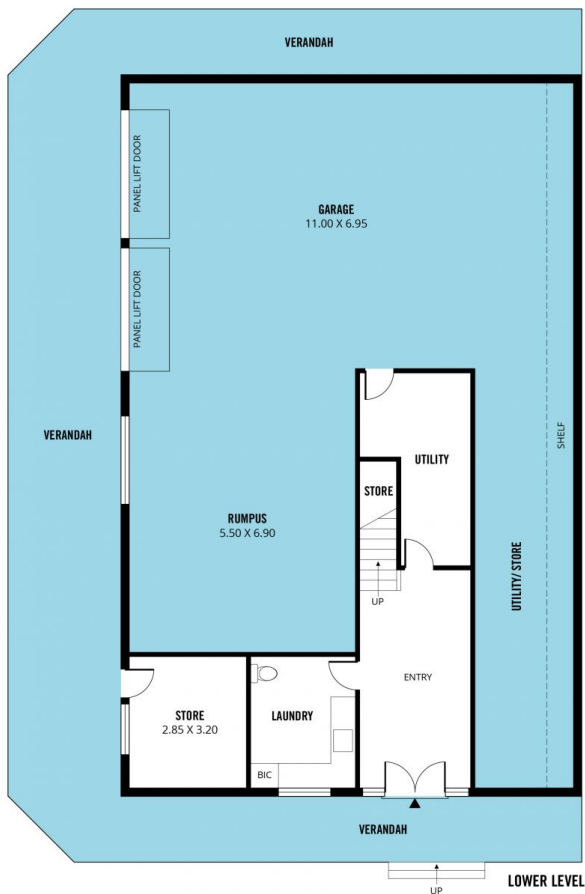
Danielle Comer
08 8322 6111



Rachael Farror
08 8322 6111

<https://www.magain.com.au>
Magain Real Estate

Shop 3, Happy Valley Shopping Centre, 50 Kenihans H
08 8322 6111



Scale in metres. This drawing is for illustration purposes only. All measurements are approximate and details intended to be relied upon should be independently verified.

Produced by The Fotobase Group