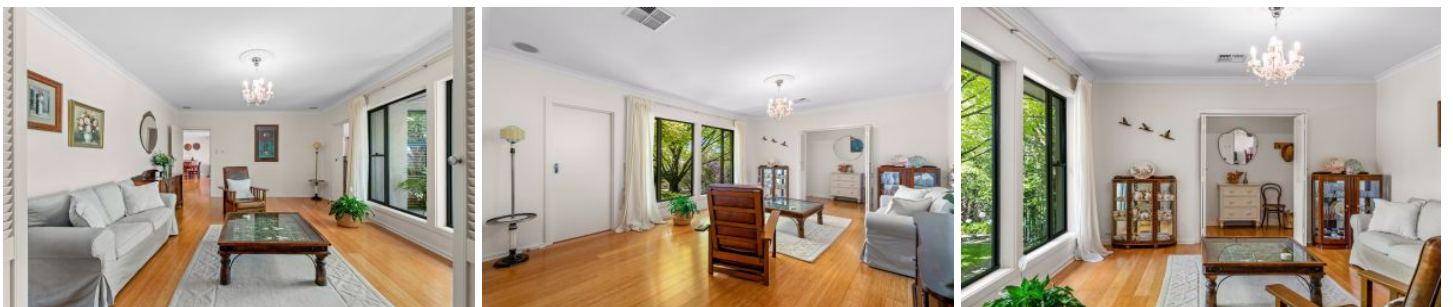


# MAGAIN



## 2 Protea Avenue Coromandel Valley SA

4 2 3

Please contact Karen Heuer for further details.

Perfectly positioned on a generous sized allotment of 1,505 sqm (approx), among the tree tops of Coromandel Valley, with visits from the neighbourhood koala. It is ideal for the family who enjoys living the country lifestyle without forgoing everyday amenities.

This solid brick home, is set back from the road, fronted by landscaped gardens and lush lawn. You will feel welcome as soon as you step inside. This much loved home features four generous sized bedrooms with multiple living areas, outdoor entertainment area and impressive workshop with electricity and office space with own entrance, outside.

**Type** : House  
**Price** : \$ 935,000  
**Land Size** : 1505 sqm  
**View** : <https://www.magain.com.au/property/2-protea-avenue-coromandel-valley-sa/8432401>



**Karen Heuer**  
**08 8381 6000**

[For full version visit the website](https://www.magain.com.au)

<https://www.magain.com.au>  
Magain Real Estate

Shop 3, Happy Valley Shopping Centre, 50 Kenihans H  
08 8322 6111

