

MAGAIN



4 Sampson Road Mitchell Park SA

4 🛏 2 🚿 1 🚗

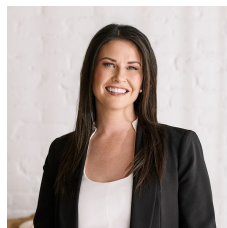
Please contact Danielle Comer or Rachael Farror for viewing times.

Situated on a quiet street amongst quality homes in the sought-after suburb of Mitchell Park, this stand-alone three-bedroom plus study family home presents approximately 153 sqm of living space. Beautifully presented and featuring a versatile floor plan, it is perfect for the growing young family while being close to local shops, public transport, and popular public and private schooling options such as Marion Primary, Westminster College, and Sacred Heart College.

Welcoming you upon entry is a neat hallway leading you past a formal lounge, and through to a spacious open-plan

[For full version visit the website](#)

Type : House
Building Size : 153 sqm
Land Size : 325 sqm
View : <https://www.magain.com.au/property/4-sampson-road-mitchell-park-sa/8432405>



Danielle Comer
08 8322 6111

RWT

