

MAGAIN



31 Baume Circuit Old Reynella SA

3 1 1

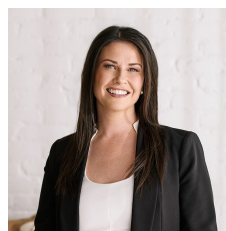
Please phone Danielle Comer or Rachael Farror for all your property advice.

Surrounded by quality homes on a low maintenance 320sqm (approx) allotment and with an inviting kerbside appeal, this beautiful family home leaves nothing to do but move straight in. With the lovely Gamay Drive Reserve only a few minutes walk away as well as being located close to popular local schools, shops, and public transport options, it's a fantastic opportunity for investors and those wishing to move into this popular lifestyle location.

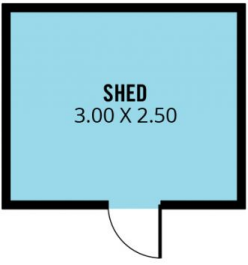
Upon entrance to the home, you're welcomed by a lovely wide entry foyer that flows seamlessly past the formal lounge and through to the modern kitchen overlooking a

[For full version visit the website](https://www.magain.com.au/property/31-baume-circuit-old-reynella-sa/8432407)

Type : House
Price : \$ 530,000
Building Size : 97 sqm
Land Size : 320 sqm
View : <https://www.magain.com.au/property/31-baume-circuit-old-reynella-sa/8432407>



Danielle Comer
08 8322 6111



Scale in metres. This drawing is for illustration purposes only. All measurements are approximate and details intended to be relied upon should be independently verified.