

MAGAIN



7 Islington Drive Sheidow Park SA

4 2 1

Please contact Danielle Comer or Rachael Farror for all your property advice.

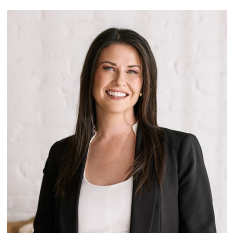
Welcome to this beautifully presented home nestled in the desirable suburb of Sheidow Park. You'll appreciate the neat and tidy exterior from the moment you arrive, setting the tone for what awaits inside.

Step through the front door and be greeted by a formal lounge, creating an elegant space for relaxation and entertaining guests. Moving through, you'll discover an open-plan kitchen, living, and meals area that effortlessly combines style and functionality.

The well-appointed kitchen is a culinary enthusiast's

[For full version visit the website](https://www.magain.com.au/property/7-islington-drive-sheidow-park-sa/8432443)

Type : House
Price : \$ 686,000
Building Size : 157 sqm
Land Size : 375 sqm
View : <https://www.magain.com.au/property/7-islington-drive-sheidow-park-sa/8432443>



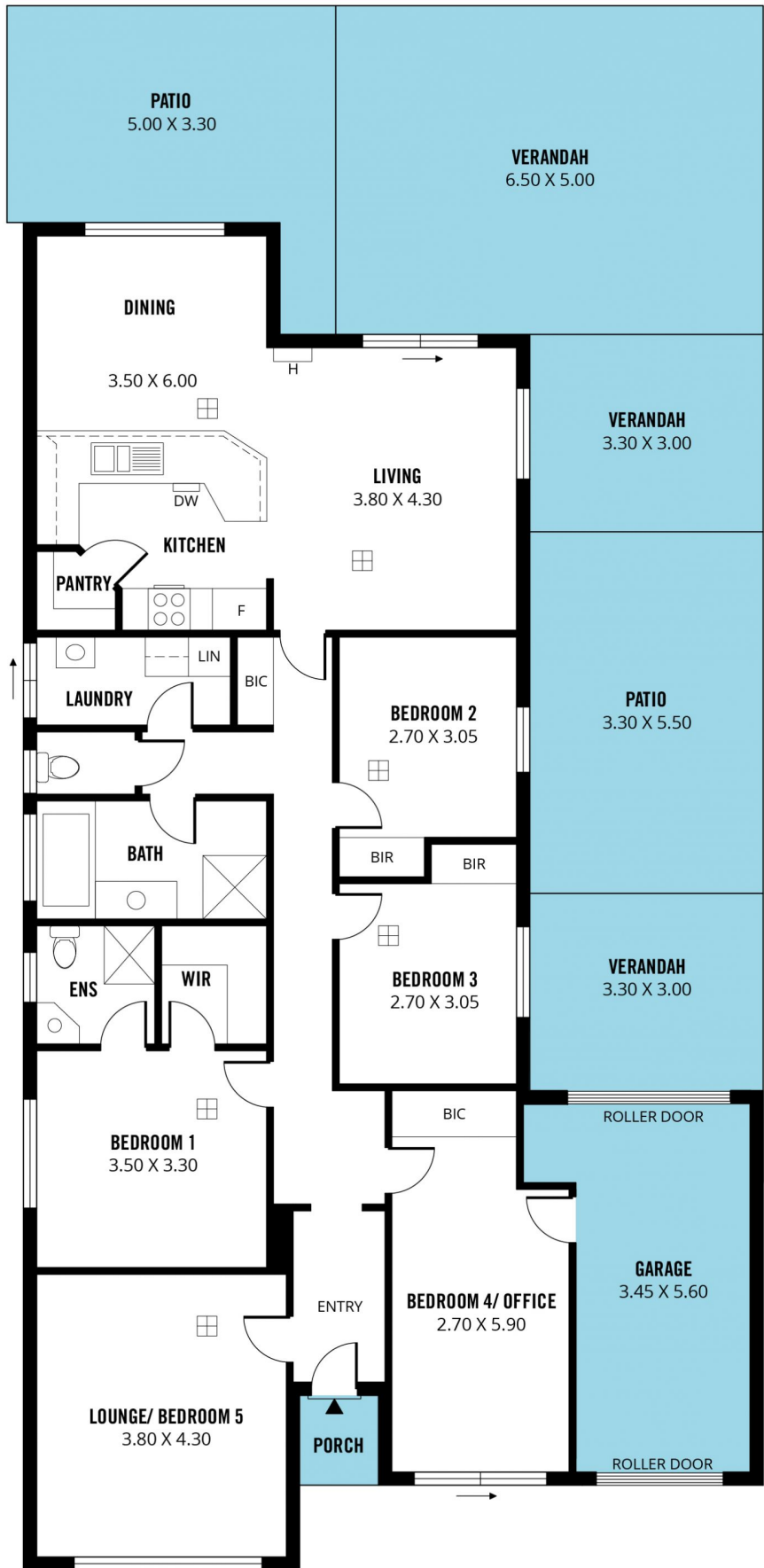
Danielle Comer
08 8322 6111



Rachael Farror
0401 097 442

<https://www.magain.com.au>
Magain Real Estate

Shop 3, Happy Valley Shopping Centre, 50 Kenihans H
08 8322 6111



Scale in metres. This drawing is for illustration purposes only. All measurements are approximate and details intended to be relied upon should be independently verified.

Produced by **The Fotobase Group**