

MAGAIN



135 East Parkway Lightsview SA

3 2 2

Please contact Danielle Comer from Magain Real Estate for all your property advice

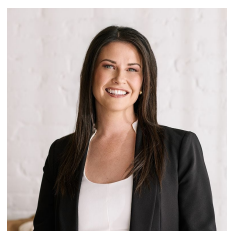
Currently tenanted on a periodic lease for \$585 per week.

Nestled in the heart of Lightsview, this architect-designed townhouse offers the perfect balance of style, comfort, and convenience. Lightsview is renowned for its contemporary urban design, stunning parks, serene lakes, and vibrant community atmosphere, making it a highly sought-after location only 8kms from the CBD.

From the moment you arrive, you'll be impressed by the grand entrance, featuring a large solid timber door paired with a Crimsafe screen door for added security. Step inside

[For full version visit the website](https://www.magain.com.au/property/135-east-parkway-lightsview-sa/8432584)

Type : House
Price : \$ 765,000
Building Size : 156 sqm
Land Size : 165 sqm
View : <https://www.magain.com.au/property/135-east-parkway-lightsview-sa/8432584>



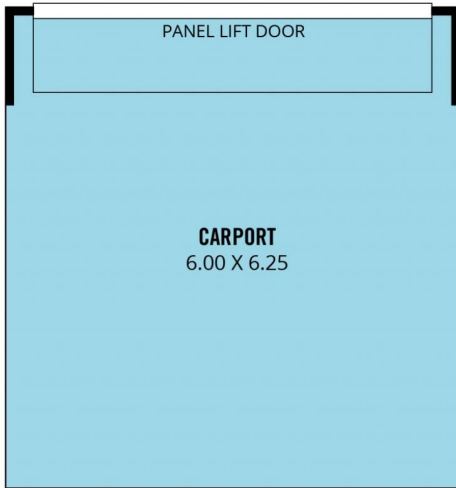
Danielle Comer
08 8322 6111



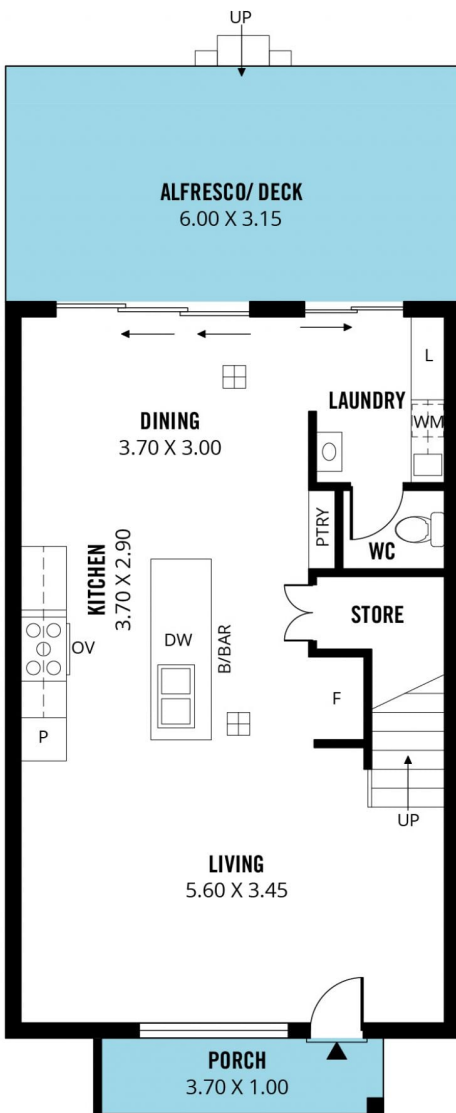
Rachael Farror
0401 097 442

<https://www.magain.com.au>
Magain Real Estate

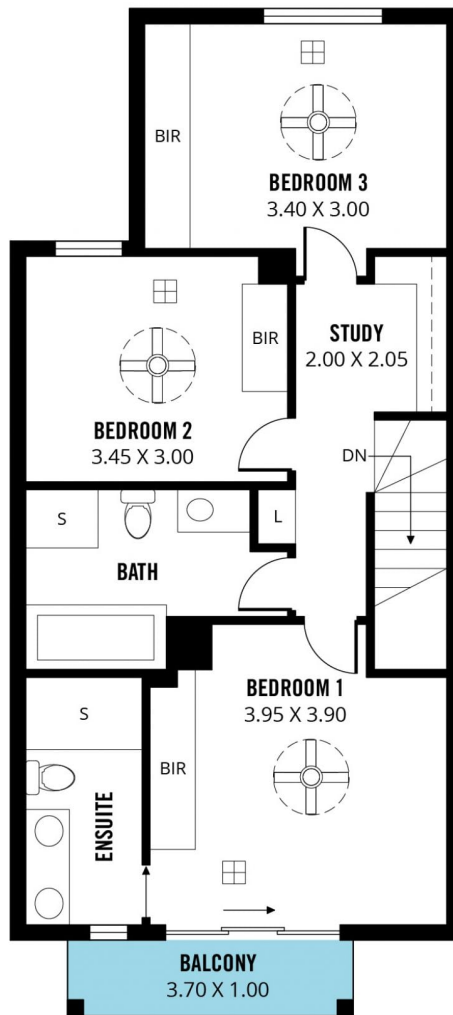
Shop 3, Happy Valley Shopping Centre, 50 Kenihans H
08 8322 6111



(NOT IN ACTUAL POSITION)



GROUND FLOOR



UPPER FLOOR

