

MAGAIN



3 Chifley Crescent Trott Park SA

3 1 1

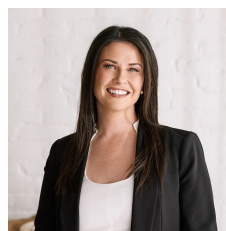
Please contact Danielle Comer from Magain Real Estate for all your property advice.

This beautifully updated family home, owned by its original owner and lovingly maintained, has been a cherished space for families across generations. Its gorgeous kerbside appeal seamlessly blends modern touches with functional living spaces, creating an inviting environment.

Step into the formal living area, and adjacent dining, where surrounding windows bathe the space in natural light, offering picturesque views of the lovely front garden. Soft timber-look flooring enhances the warm and welcoming atmosphere, perfect for family gatherings or serene relaxation. The spacious living room is a comfortable yet

[For full version visit the website](https://www.magain.com.au/property/3-chifley-crescent-trott-park-sa/8432605)

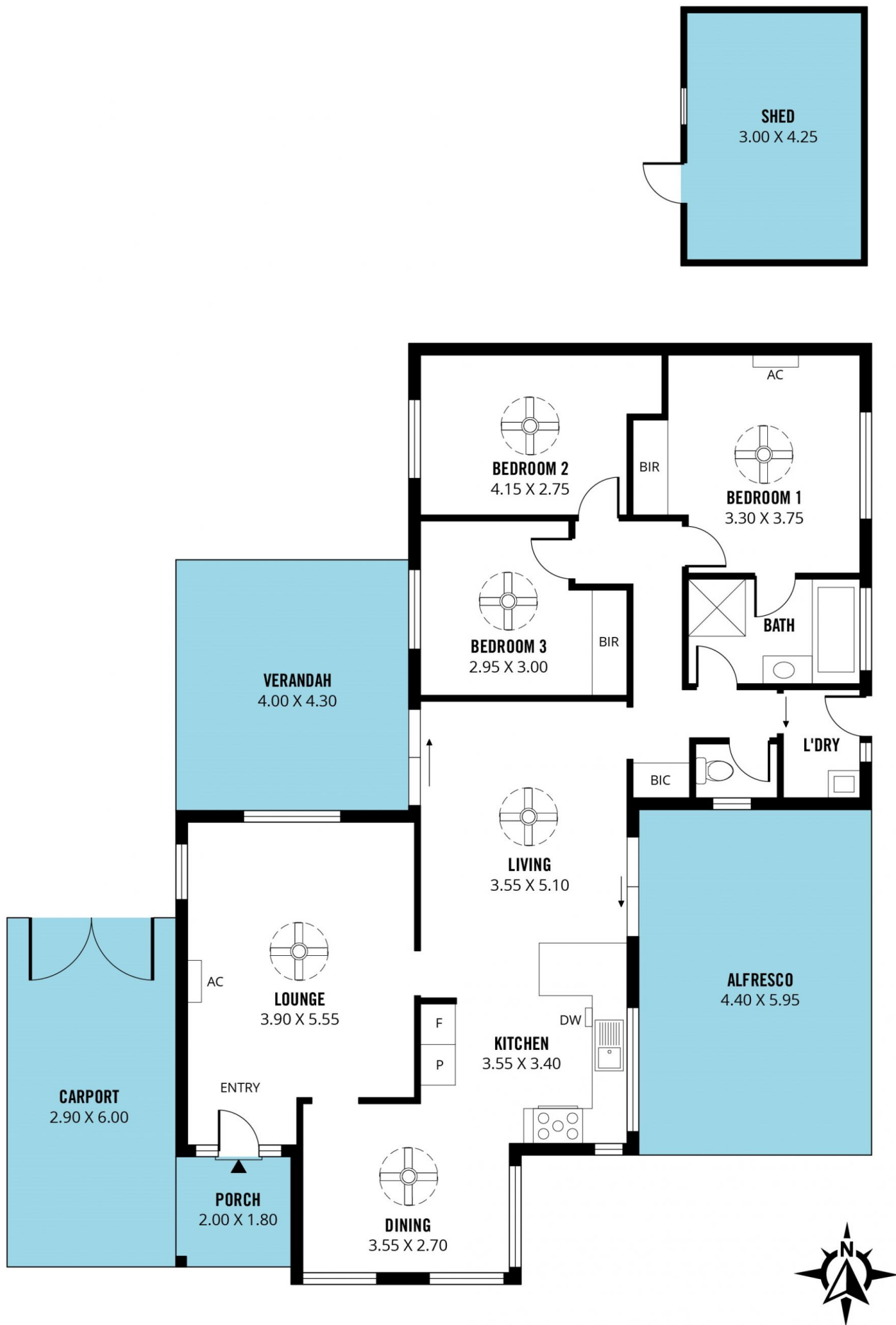
Type : House
Price : \$ 780,000
Building Size : 127 sqm
Land Size : 623 sqm
View : <https://www.magain.com.au/property/3-chifley-crescent-trott-park-sa/8432605>



Danielle Comer
08 8322 6111

<https://www.magain.com.au>
Magain Real Estate

Shop 3, Happy Valley Shopping Centre, 50 Kenihans H
08 8322 6111



Scale in metres. This drawing is for illustration purposes only. All measurements are approximate and details intended to be relied upon should be independently verified.

Produced by **The Fotobase Group**