

# MAGAIN



## 16 Mariner Drive Sheidow Park SA

6 4 4

Please contact Danielle Comer for viewing times.

Welcome to this magnificent six-bedroom, three-level residence, a true statement of luxury and comfort set in the serene hills of Sheidow Park. Boasting breathtaking panoramic views and an entertainer's dream layout, this home offers a perfect blend of style, space, and functionality.

As you step into the grand entryway on the upper ground level, you are immediately met with a sense of space and elegance, highlighted by 2.7m high ceilings and double-glazed windows throughout. To your left, a spacious study provides the perfect work-from-home space or could easily serve as an seventh bedroom. To the right, Bedroom

[For full version visit the website](https://www.magain.com.au/property/16-mariner-drive-sheidow-park-sa/8432616)

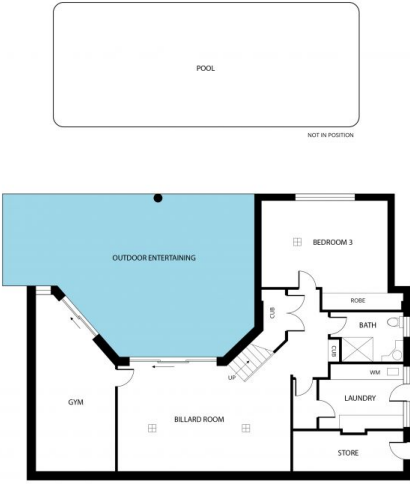
**Type** : House  
**Price** : \$ 1,680,000  
**Building Size** : 550 sqm  
**Land Size** : 800 sqm  
**View** : <https://www.magain.com.au/property/16-mariner-drive-sheidow-park-sa/8432616>



**Danielle Comer**  
08 8322 6111

<https://www.magain.com.au>  
Magain Real Estate

Shop 3, Happy Valley Shopping Centre, 50 Kenihans H  
08 8322 6111



LOWER GROUND LEVEL



MIDDLE GROUND LEVEL



UPPER GROUND LEVEL

Scale in metres. This drawing is for illustration purposes only. All measurements are approximate and details intended to be relied upon should be independently verified.