

# MAGAIN



## 911/180 Morphett Street Adelaide SA

1 1

Please contact Stephen Keenihan from Magain Real Estate for all your property advice.

Escape to the heart of the city in this stunning apartment that boasts breathtaking views from its prime location in the Adelaide CBD. Whether you're looking for a new home or a savvy investment opportunity, this property is sure to impress with its unique blend of urban convenience and natural beauty.

Location is key, which this will not disappoint. Within walking distance to the University of South Australia, Adelaide Central Markets, Convention Centre & amazing restaurants, this is a great all-round apartment.

[For full version visit the website](https://www.magain.com.au/property/91180-morphett-street-adelaide-sa/8432647)

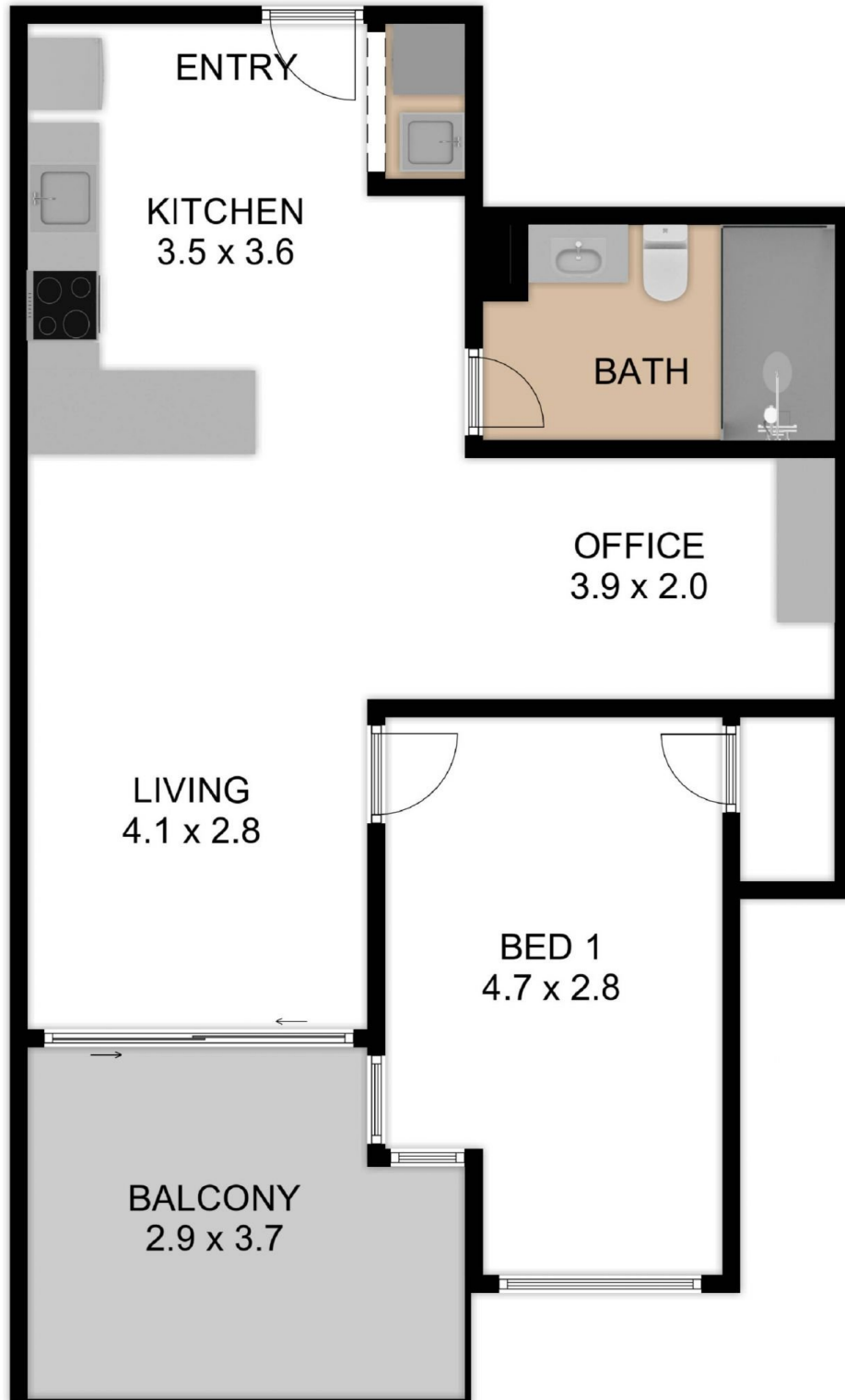
<b>Type</b>	: Apartment
<b>Price</b>	: \$ 380,000
<b>Building Size</b>	: 69 sqm
<b>View</b>	: <a href="https://www.magain.com.au/property/91180-morphett-street-adelaide-sa/8432647">https://www.magain.com.au/property/91180-morphett-street-adelaide-sa/8432647</a>



**Stephen Keenihan**  
0415 408 208

<https://www.magain.com.au>  
Magain Real Estate

104 Payneham Road Stepney SA  
08 8212 5899



C|R

911/180 MORPHETT STREET, ADELAIDE, SA 5000

58.30 M<sup>2</sup>  
INTERNAL AREA

10.40 M<sup>2</sup>  
BALCONY

68.70 M<sup>2</sup>  
GRAND TOTAL

THE FLOOR PLAN IS FOR ILLUSTRATION PURPOSE ONLY. MEASUREMENTS ARE APPROXIMATE AND INTERNAL. NOT TO SCALE © BREP



C|R

911/180 MORPHETT STREET, ADELAIDE, SA 5000

58.30 M<sup>2</sup>  
INTERNAL AREA

10.40 M<sup>2</sup>  
BALCONY

68.70 M<sup>2</sup>  
GRAND TOTAL

THE FLOOR PLAN IS FOR ILLUSTRATION PURPOSE ONLY. MEASUREMENTS ARE APPROXIMATE AND INTERNAL. NOT TO SCALE © BREP