

MAGAIN



10 Jollies Court Seaford Meadows SA

3  2  2 

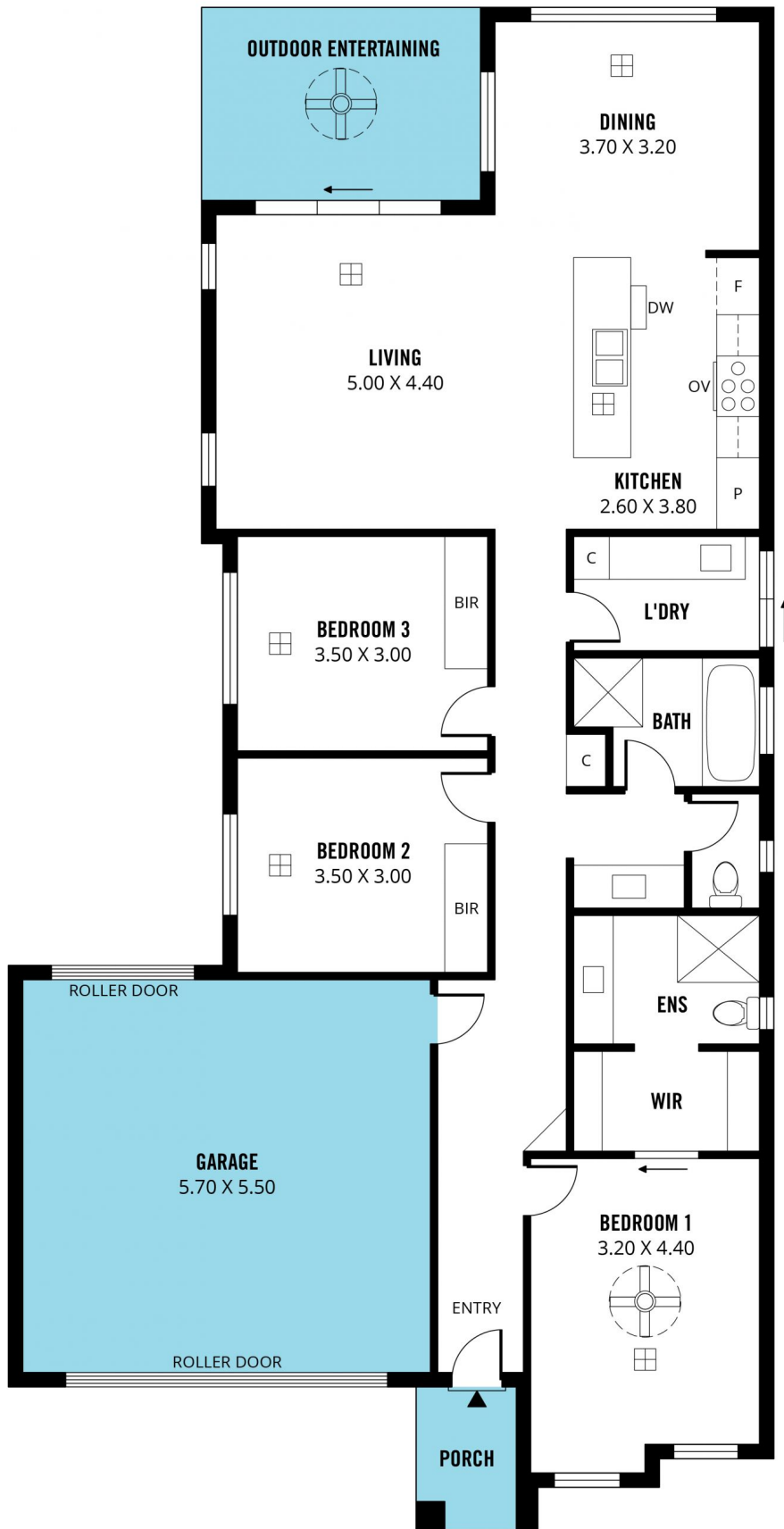
If you are looking for a property for you and your family to create memories for many years to come, then look no further than this Luxurious three-bedroom home. Situated in a quiet pocket of this ever-popular Southern location, with all major public amenities on your doorstep, as well as world-famous local beaches, only a short 2-minute drive or 15 minutes walk away.

Positioned at the front of the home is the huge, grand master suite that features a large walk-in robe and an ensuite with the highest quality finishes. Bedrooms two and three are both generous in size and offer built-in robes.

As you walk further through the grand hallway, the home expands to reveal the large sunken main open plan

[For full version visit the website](https://www.magain.com.au/property/10-jollies-court-seaford-meadows-sa/8432734)

Type : House
Price : \$ 582,000
Building Size : 131 sqm
Land Size : 375 sqm
View : <https://www.magain.com.au/property/10-jollies-court-seaford-meadows-sa/8432734>



Scale in metres. This drawing is for illustration purposes only. All measurements are approximate and details intended to be relied upon should be independently verified. Produced by **The Fotobase Group**