

# MAGAIN



18 Fremantle Road PORT NOARLUNGA SOUTH SA

3 2 1

Ideally located just 650m from the Esplanade, and close to local shops, schools and transport, this home is perfect for a range of buyer including first home buyers, those looking to be a part of the great lifestyle that Port Noarlunga South offers, and investors as this property is currently tenanted to a great tenant.

Set on an easy maintenance block, this property features well established gardens and a single carport at the front of the home. Stepping through the front entry, you are greeted by the spacious lounge & dining room, with a split system air conditioner for year round comfort, plus large picture windows allowing plenty of natural light in.

The kitchen looks over the casual meals/study area, and is well equipped with good cupboard and bench space, dishwasher and breakfast bar.

**Type** : House

**View** : <https://www.magain.com.au/property/18-fremantle-road-port-noarlunga-south-sa/8432787>



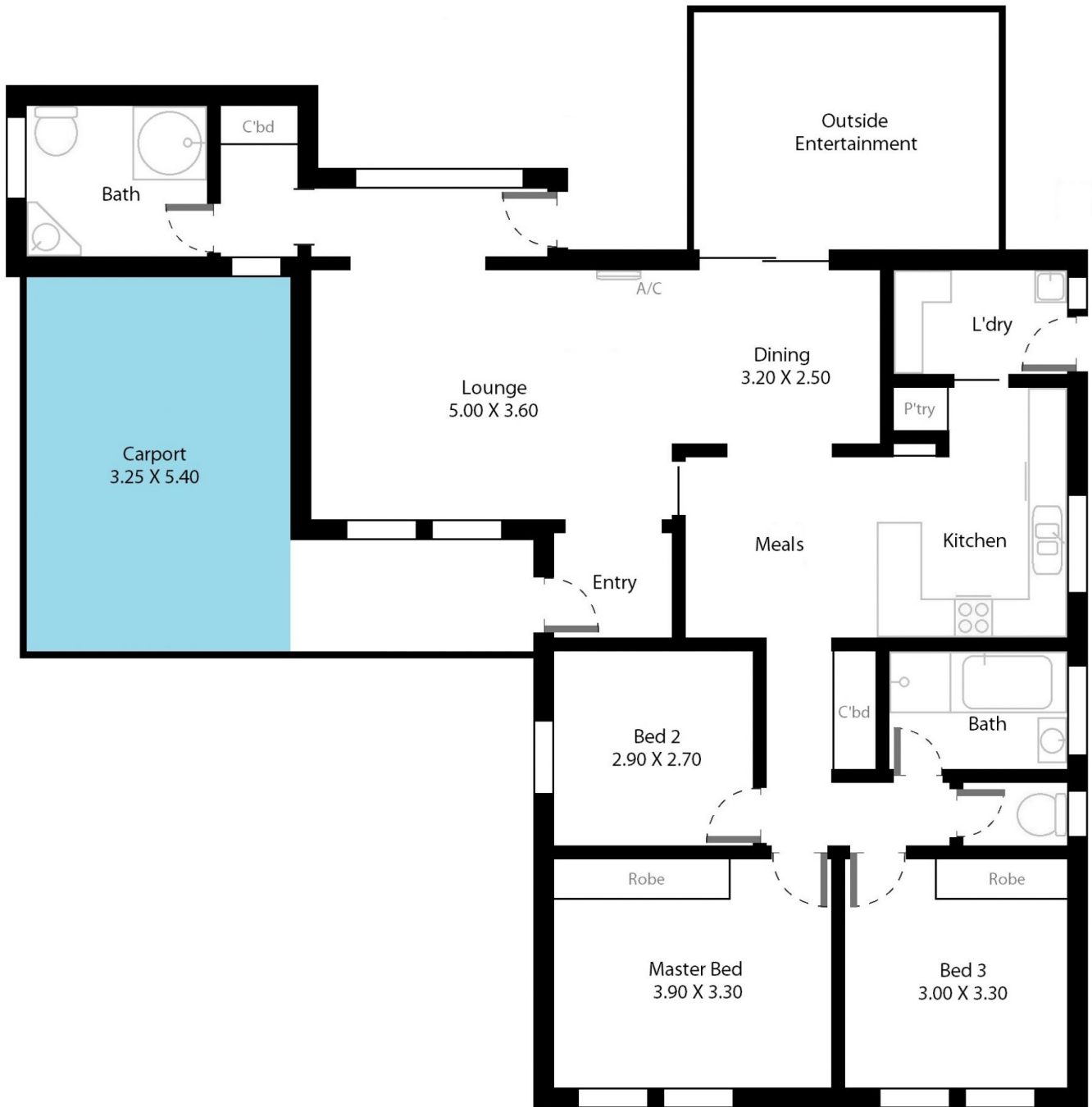
**David Hams**  
08 8366 2230

[For full version visit the website](https://www.magain.com.au)

<https://www.magain.com.au>  
Magain Real Estate

Shop 60, Seaford Central Shopping Centre, Commercial Road  
08 8366 2230

18 Fremantle Road Port Noarlunga South, South Australia.



**Picture intended as a reference only.** Any specific measurements required should be obtained by an independent surveyor.