

# MAGAIN



## 20 Whitestone Crescent SEAFORD RISE SA

3  2  1 

Contact David Hams for more information or to arrange an inspection.

Nestled behind a mature, easy care front garden, this impressive 3 bedroom home has a great street appeal. Situated directly opposite a park and walking trail, close to the Seaford Rise Primary School, shops and transport options including the Southern Expressway and Seaford rail extension, this private location is ideal.

The tiled entry hall gives access to the spacious main bedroom that is positioned at the front of the home, complete with a walk-in robe, ceiling fan, feature bay window and ensuite. Also at the front of the home is the formal lounge room, with a ceiling fan and lovely view over

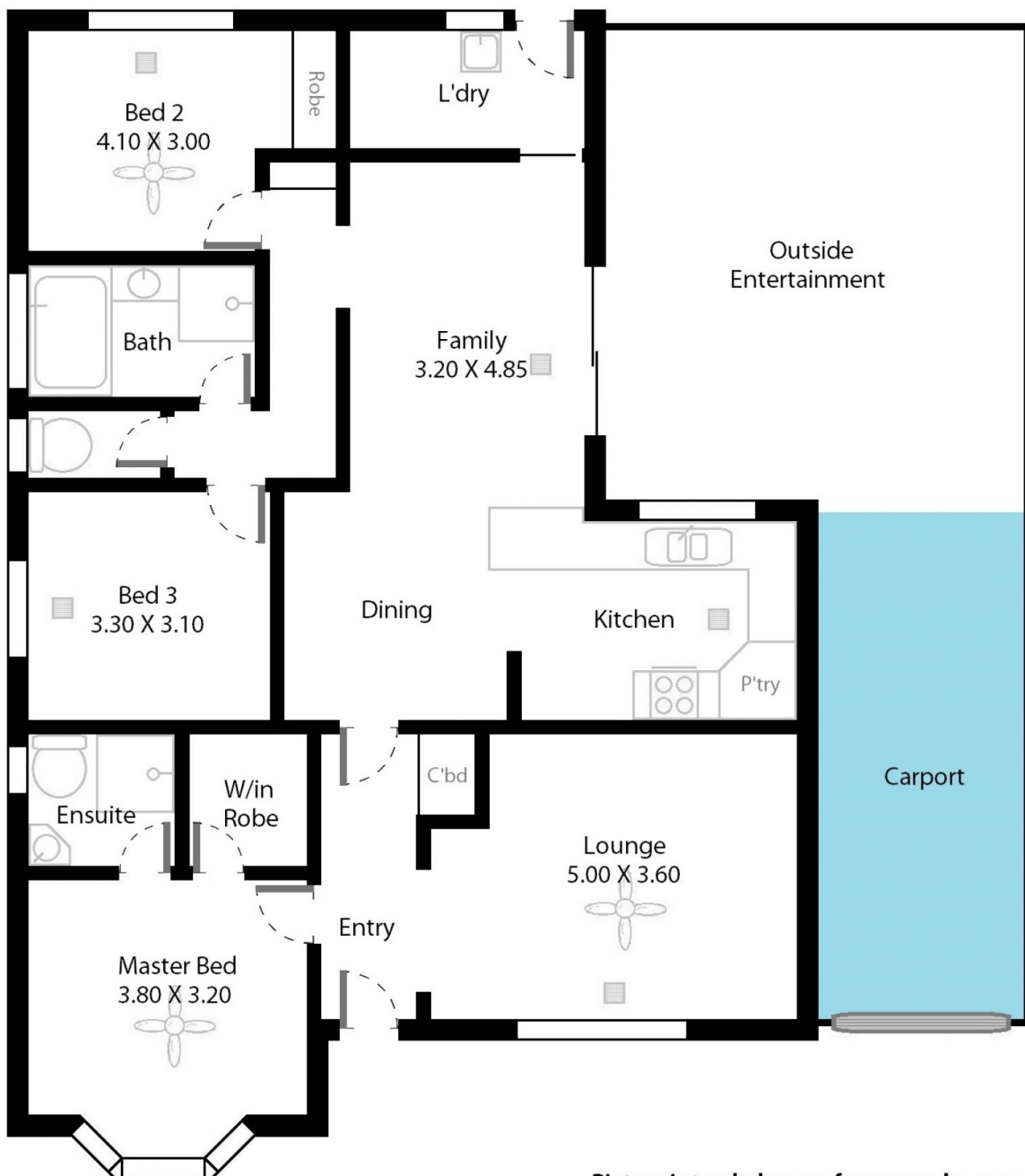
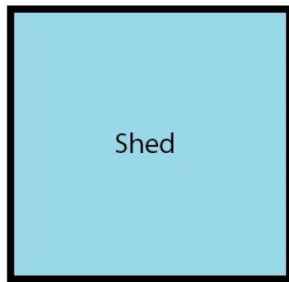
**Type** : House  
**Land Size** : 377 sqm  
**View** : <https://www.magain.com.au/property/20-whitestone-crescent-seaford-rise-sa/8432802>



**David Hams**  
08 8366 2230

[For full version visit the website](https://www.magain.com.au)

# 20 Whitestone Crescent Seaford Rise, South Australia.



**Picture intended as a reference only.** Any specific measurements required should be obtained by an independent surveyor.