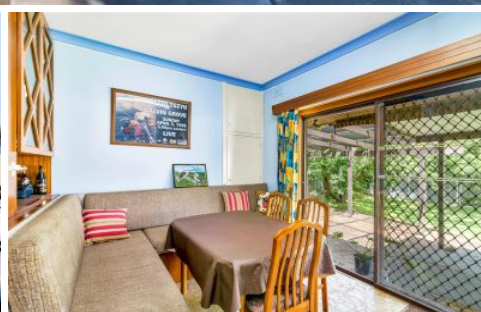


# MAGAIN



45 Salisbury Avenue MORPHETT VALE SA

3  2  2 

Contact David Hams for more information or to arrange an inspection.

This solid brick home is set in a great pocket of Morphett Vale, close to shops, schools and the nearby Christie Creek wetland area. Featuring 3 bedrooms, a spacious yard and drive through access to a 6m x 8.5m garage/workshop, this property would be suitable for a range of buyers including first home buyers, developers, young families and investors, and is worth serious consideration.

At the front of the home is the formal lounge room, which is equipped with a gas heater and a large picture window with views over the mature front garden, with an adjacent study

[For full version visit the website](https://www.magain.com.au/property/45-salisbury-avenue-morphett-vale-sa/8432835)

**Type** : House  
**Land Size** : 609 sqm  
**View** : <https://www.magain.com.au/property/45-salisbury-avenue-morphett-vale-sa/8432835>



**David Hams**  
08 8366 2230

**AVIARY**

**SHED**  
6.00 X 8.58



*This drawing is for illustration purposes only .  
All measurements are approximate and details intended  
to be relied upon should be independently verified.*