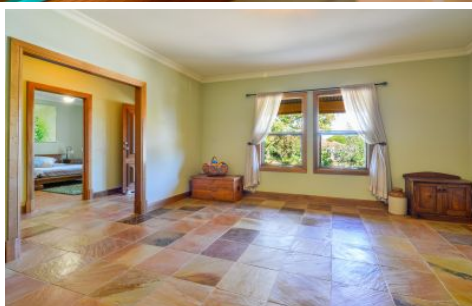


# MAGAIN



22 Kernick Avenue WILLUNGA SA

4  2  6 

Very rarely does a property become available that has as much to offer as this extremely impressive property does. Firstly the location, this home is nestled amongst other quality homes in the McIntosh Estate and is set in a quiet Cul-De-Sac position so its only local traffic that will ever drive past. Its within walking distance to a number of Schooling options and the beautiful Willunga township with its quality cafes, local markets and so much more

This property has a lovely street appeal, with an established, easy care front garden and an impressive federation style facade. As soon as you enter the home you can feel that this home has been loved by the current and original owners, and that you are about to inspect something special. The large entry hall gives access to the

**Type** : House  
**Land Size** : 1617 sqm  
**View** : <https://www.magain.com.au/property/22-kernick-avenue-willunga-sa/8432852>



**David Hams**  
08 8366 2230

[For full version visit the website](https://www.magain.com.au)

22 Kernick Avenue Willunga, South Australia

Shed  
6.00 X 12.0

