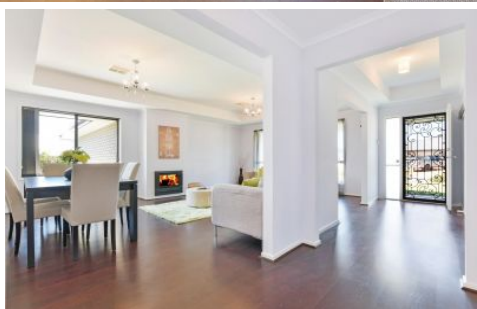


# MAGAIN



## 18 Beachport Road SEAFORD RISE SA

5 🛏 2 🚿 2 🚗

Beautifully appointed and situated 'Coast' Estate, one of the south's most sought-after beachside positions - this sensational home offers approximately 270sqm of sensational living - and is priced well below replacement cost!

Impeccable kerbside appeal sets the scene for a property that offers a floorplan of breathtaking synergy, beginning with the grand formal lounge with vaulted ceilings, beautiful light fittings and feature gas fireplace. Also situated at the front of the home, the generous master suite complete with ensuite, large walk-in robes and bay window.

At the hub of the home, vast open plan kitchen (complete with large cooktop and dishwasher), family and dining

**Type** : House  
**Building Size** : 29 sqm  
**Land Size** : 601 sqm  
**View** : <https://www.magain.com.au/property/18-beachport-road-seaford-rise-sa/8432854>

[For full version visit the website](https://www.magain.com.au)

<https://www.magain.com.au>  
Magain Real Estate

Shop 60, Seaford Central Shopping Centre, Commercial Road  
08 8366 2230

# 18 Beachport Road Seaford Rise, South Australia



**Picture intended as a reference only.** Any specific measurements required should be obtained by an independent surveyor.