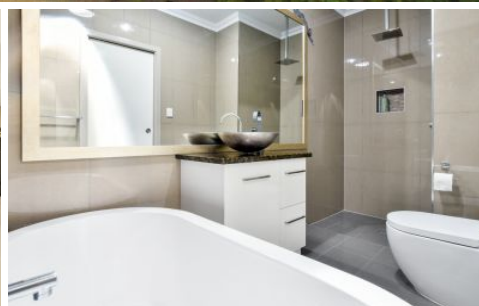
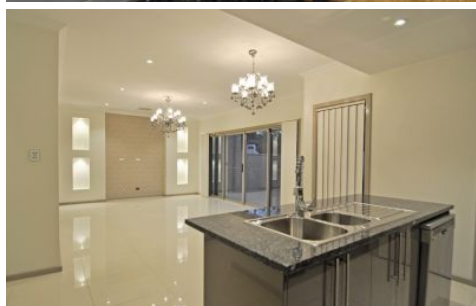


MAGAIN



13E Rugby Street DOVER GARDENS SA

3 2 2

Finished to the most exceptional standards, this recently built impeccably presented home pushes all of its attributes to the very highest levels, and is an absolute standout in its class.

Peacefully situated opposite a lovely reserve with Westfield Marion just moments away, and only minutes to Brighton Jetty, the home's wet areas are exquisite; the bathrooms are breathtaking and the stunning kitchen includes granite benchtops & stainless steel appliances.

The home offers three spacious bedrooms - the master with luxurious ensuite and overlooking the lovely reserve.

Exceptionally spacious open plan living & dining areas

[For full version visit the website](https://www.magain.com.au/property/13e-rugby-street-dover-gardens-sa/8432883)

Type : House
Building Size : 14 sqm
View : <https://www.magain.com.au/property/13e-rugby-street-dover-gardens-sa/8432883>