




MAGAIN



10 Wheelhouse Drive SEAFORD MEADOWS SA

3  2  1 

Please contact Cameron Bowes today to discuss a viewing time.

Here is a property that is sure to impress. This beautifully presented home will have you falling in love from the moment you enter the property.

This home has three good sized bedrooms, the master suite with a walk in robe and an ensuite. Bedroom two and three are both serviced by a separate bathroom.

The kitchen is amazing. It features stainless steel appliances and is built to handle the needs of the busy modern day family. The kitchen conveniently overlooks the meals and family area. In the middle of the property is a

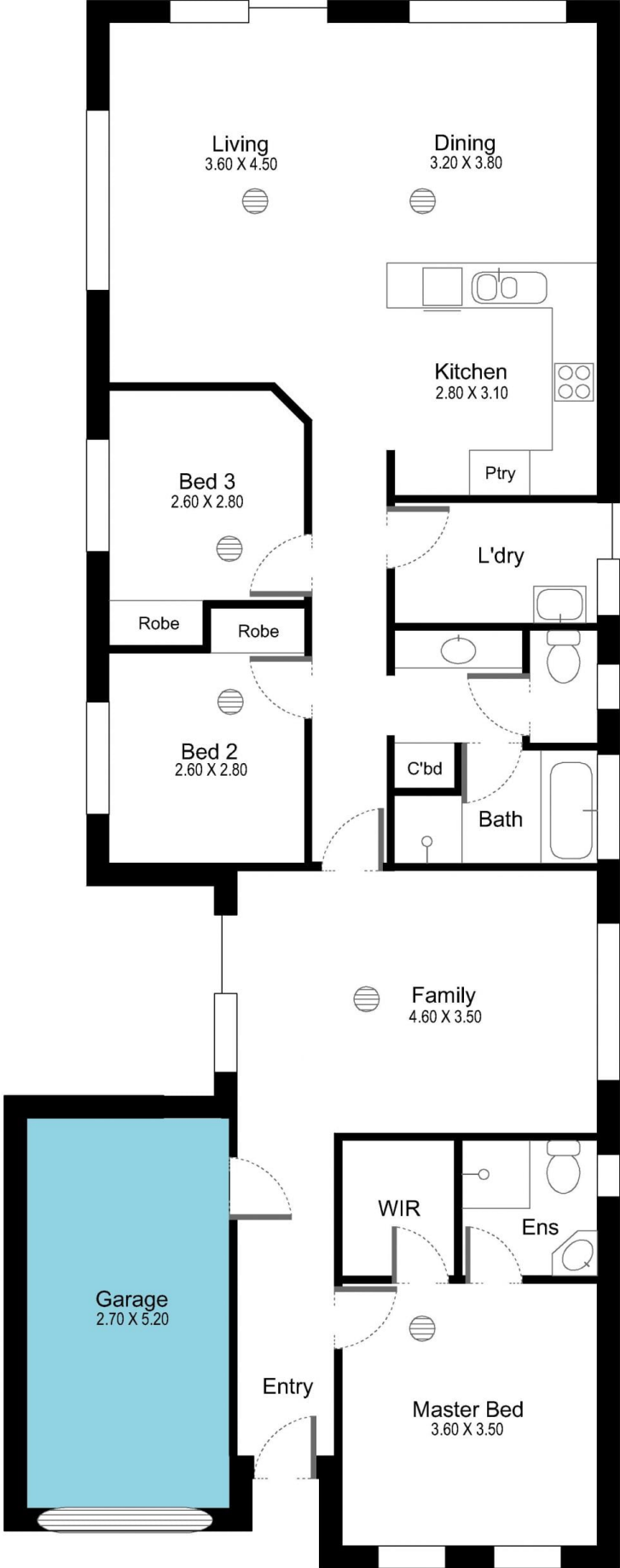
Type : House
Building Size : 15 sqm
Land Size : 465 sqm
View : <https://www.magain.com.au/property/10-wheelhouse-drive-seaford-meadows-sa/8432902>

[For full version visit the website](https://www.magain.com.au)

<https://www.magain.com.au>
Magain Real Estate

Shop 60, Seaford Central Shopping Centre, Commercial Road
08 8366 2230

10 Wheelhouse Road Seaford Meadows, South Australia



Picture intended as a reference only. Any specific measurements required should be obtained by an independent surveyor.