



MAGAIN



299 Pimpala Road WOODCROFT SA

4  2  4 

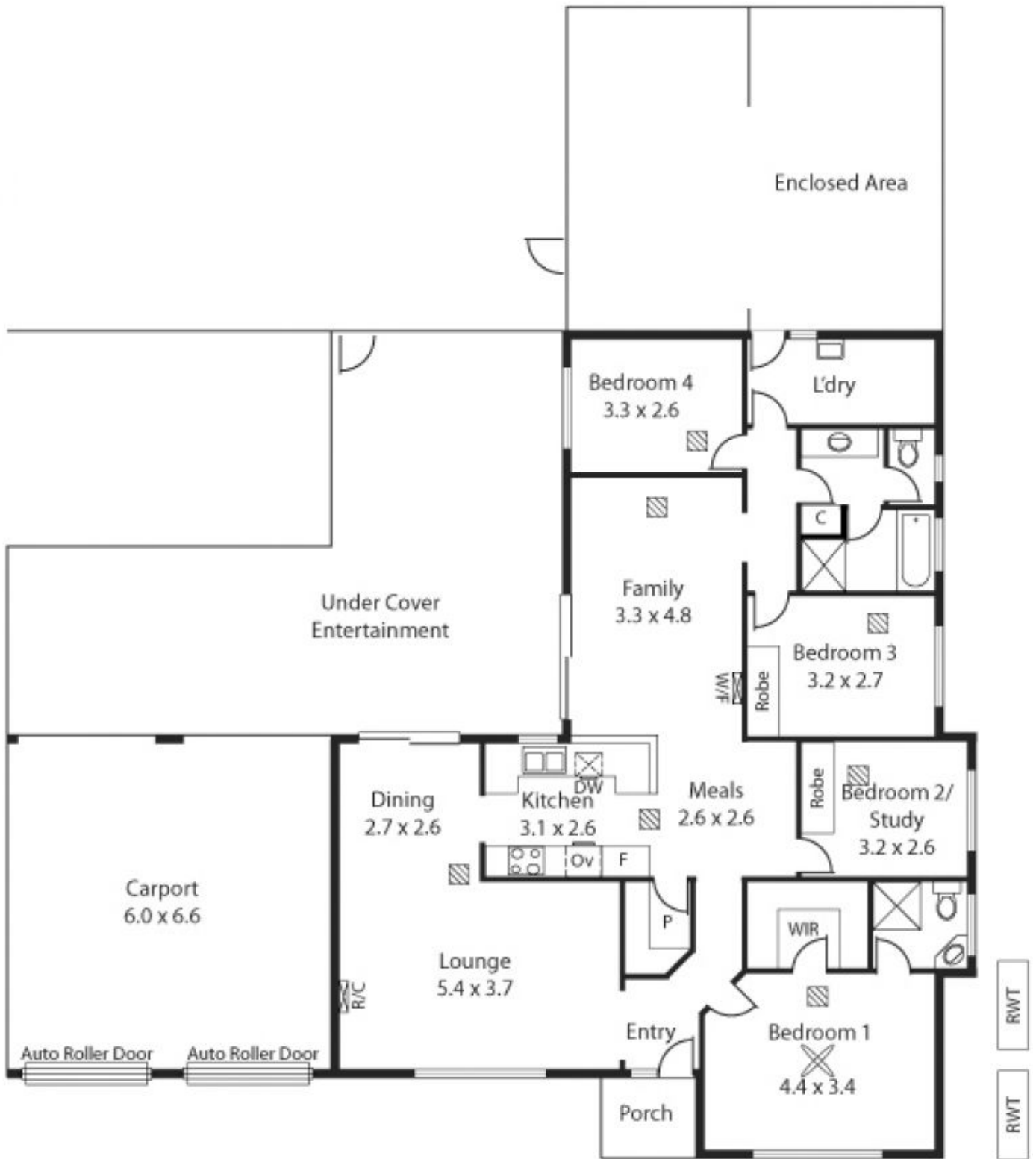
Where suburbia merges with treetops and tranquillity in Woodcrofts foothills, you will find this delightful family home with all the I wants and over a quarter of an acre of wonderful grounds.

Impeccably presented with fresh paint and excellent fixtures, the home comprises four bedrooms (3 with robes) including a spacious master suite complete with ensuite, walk-in robes and attractive outlooks over the gardens and trees beyond an outlook which can also be enjoyed from the lovely formal living and dining areas.

Graced with high-quality stainless steel appliances, the elegant galley kitchen includes pantry and overlooks family room and the expansive grounds beyond.

[For full version visit the website](#)

Type : House
Building Size : 19 sqm
Land Size : 1064 sqm
View : <https://www.magain.com.au/property/299-pimpala-road-woodcroft-sa/8432904>



RWT

RWT