

MAGAIN



6 Yachtsman Street SEAFORD SA

4 2 3

Introducing a spacious home of immense charm, lovingly maintained and offering all the facilities a family could wish for (including 5kw solar electricity system!)

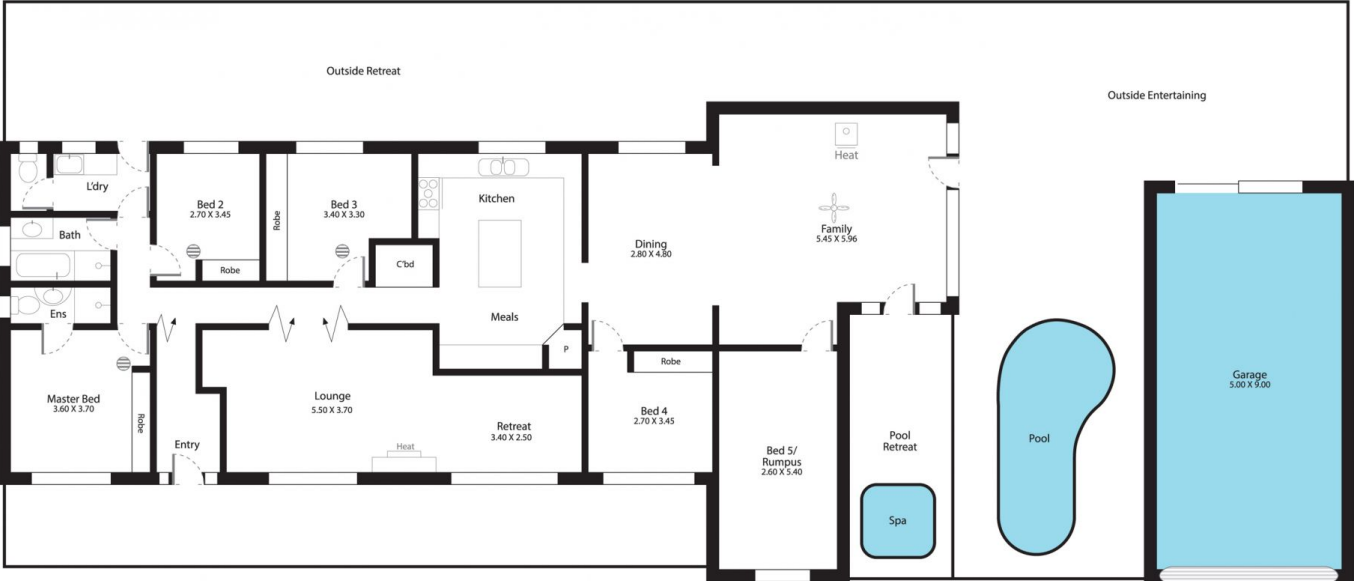
Sited just moments from stunning beaches and with all facilities close at hand, the home includes formal and informal living areas, the formal lounge including feature fireplace and a graceful English charm. At the hub of the home, the spacious kitchen conveys a beautiful blend of country charm and modern elegance, and is complemented by appliances that will delight the chef of the home!

From here, step into grand open plan dining and family areas, perfectly appointed with character cathedral ceilings, lovely combustion fireplace and superb fixtures, and

Type : House
Building Size : 22 sqm
Land Size : 690 sqm
View : <https://www.magain.com.au/property/6-yachtsman-street-seaford-sa/8432905>

[For full version visit the website](#)

6 Yatchsman Street Seaford, South Australia



Picture intended as a reference only. Any specific measurements required should be obtained by an independent surveyor.