

# MAGAIN



159D Cross Road WESTBOURNE PARK SA

4 3 3

Built to truly exceptional standards, this breathtaking brand new home pushes all of its attributes to the very highest levels - and is peacefully situated close to Adelaide's CBD with transport and facilities all close-by.

Offering a very generous and well-planned floorplan of approximately 250sqm with four spacious bedrooms including a grand master suite, you will find the home's finishings absolutely exquisite, including the luxurious bathrooms - whilst the stunning European kitchen includes stainless steel appliances.

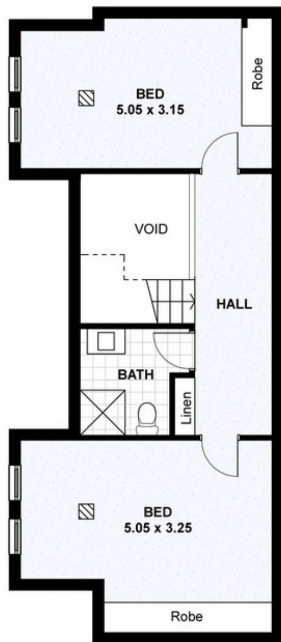
Grand open living and dining includes showpiece recessed fireplace, ornate chandelier light fittings and 2.7m ceilings. From the kitchen and dining area, elegant sliding doors

**Type** : House  
**Building Size** : 27 sqm  
**Land Size** : 480 sqm  
**View** : <https://www.magain.com.au/property/159d-cross-road-westbourne-park-sa/8432932>

[For full version visit the website](https://www.magain.com.au)

<https://www.magain.com.au>  
Magain Real Estate

Shop 60, Seaford Central Shopping Centre, Commercial Road  
08 8366 2230



**LEVEL 1**

