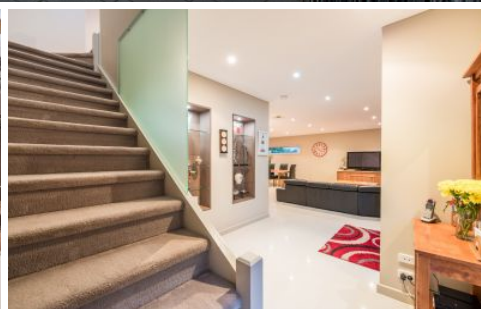


# MAGAIN



69A Cliff Avenue PORT NOARLUNGA SOUTH SA

3  2  4 

Offering modern easy care living less than 100m to the Esplanade. The remote controlled front gates lead down the private driveway to the striking facade of this impressive and spacious 2009 built townhouse. There is a double garage with automatic roller door, plus additional storage or parking for a number of vehicles, a boat or even a caravan.

As soon as you move through the front door into the classy entrance, you immediately appreciate that this property is something special. The large downstairs open plan living area feels amazing. It is the hub of the home with the lounge area and the adjacent dining/meals being overlooked by a very well appointed kitchen. The kitchen boasts quality stainless steel appliances, including a dishwasher, island bench with dual sink and a gas cooktop.

[For full version visit the website](https://www.magain.com.au/property/69-a-cliff-avenue-port-noarlunga-south-sa/8432948)

**Type** : House  
**Building Size** : 25 sqm  
**Land Size** : 389 sqm  
**View** : <https://www.magain.com.au/property/69-a-cliff-avenue-port-noarlunga-south-sa/8432948>



**David Hams**  
08 8366 2230

69a Cliff Avenue Port Noarlunga South, South Australia

