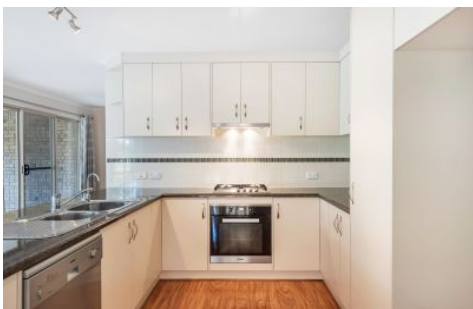





MAGAIN



2 Teal Close ALDINGA BEACH SA

3  2  2 

Please contact Jemma Turner for more information, or to view the property.

If waking up to nature, kangaroos and birdlife every morning, being located on a quiet, no-through street surrounded by other quality homes, in a beachside suburb, is what you're looking for than look no further than 2 Teal Close, Aldinga Beach.

Situated across the road from Aldinga Scrub/Wetlands, this 3 bedroom, 2010 built Sterling home is much more than meets the eye from the road. Inside, the master bedroom is at the front of the home with glorious views out the bay window. A modern en-suite bathroom and walk in wardrobe complements this generous room.

[For full version visit the website](https://www.magain.com.au/property/2-teal-close-aldinga-beach-sa/8432973)

Type : House
Building Size : 19 sqm
Land Size : 406 sqm
View : <https://www.magain.com.au/property/2-teal-close-aldinga-beach-sa/8432973>



Jemma Turner
08 8366 2230



Scale in metres. This drawing is for illustration purposes only. All measurements are approximate and details intended to be relied upon should be independently verified.

Produced by **The Fotobase Group**