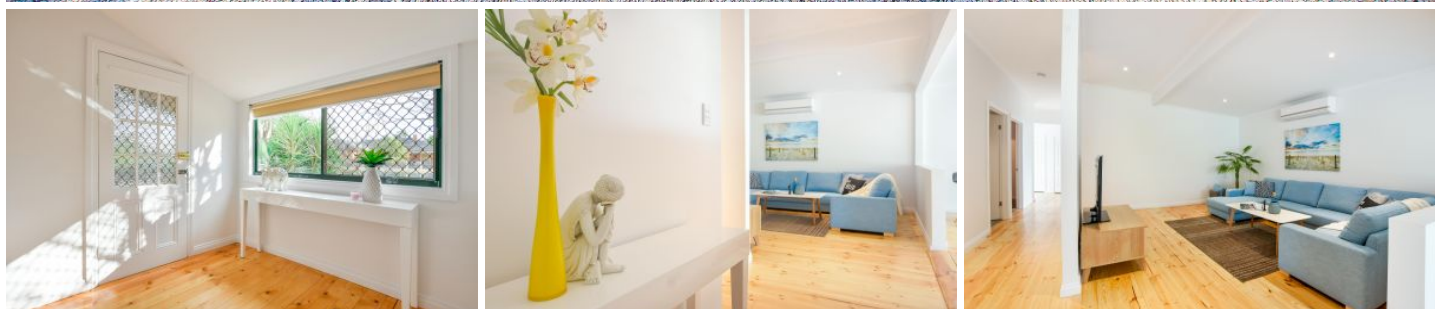


MAGAIN



26 Dodd Avenue PORT NOARLUNGA SA

3 1 4

This charming cottage circa 1928 is one you will fall in love with. If you are looking for a character home in Port Noarlunga with drive through access to a double garage, then inspection is a must.

The property consists of 3 bedrooms with the main having wir and bed 2 birs. Spacious lounge room with split system air conditioning flows into the dining room and adjacent kitchen that has neutral tones and ample bench space, gas hot-plate and dishwasher. Polished floors through-out the main traffic areas really compliment the home and adds to the charm. The bath room is fresh and has neutral tones.

Let's step outside to the undercover entertaining area that is perfect for entertaining family and friends and there's

[For full version visit the website](https://www.magain.com.au/property/26-dodd-avenue-port-noarlunga-sa/8433046)

Type : House
Building Size : 11 sqm
Land Size : 780 sqm
View : <https://www.magain.com.au/property/26-dodd-avenue-port-noarlunga-sa/8433046>



Jason Smart
08 8366 2230

26 Dodd Avenue Port Noarlunga, South Australia



Picture intended as a reference only. Any specific measurements required should be obtained by an independent surveyor.