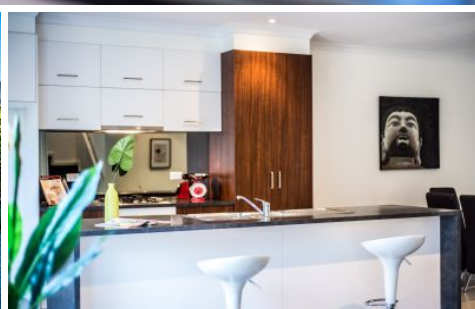


MAGAIN



2/7 Konrad Street PORT NOARLUNGA SA

3 1 1

Please contact Jemma Turner for more information, or to view the property!

Wow! What a home, what a location, and what a lifestyle you could live in this lavishing 2009 built, architecturally designed townhouse. Located only 100m from Gawler Street, and many other amenities Port Noarlunga offers (inc exceptional dining), and less than a 5 minute walk to the picturesque Port Noarlunga beach, this rarely offered package is sure to grab your attention.

Privately located at the back of a small group of three, the home offers a stylish and modern open plan floor plan downstairs. Tastefully placed wall recess', 2.7 ceilings and tiled flooring create an elegant and executive feel in this

Type : House
Land Size : 226 sqm
View : <https://www.magain.com.au/property/27-konrad-street-port-noarlunga-sa/8433068>



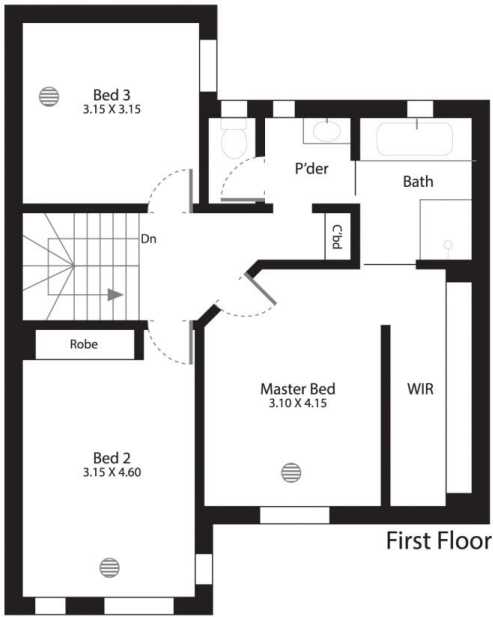
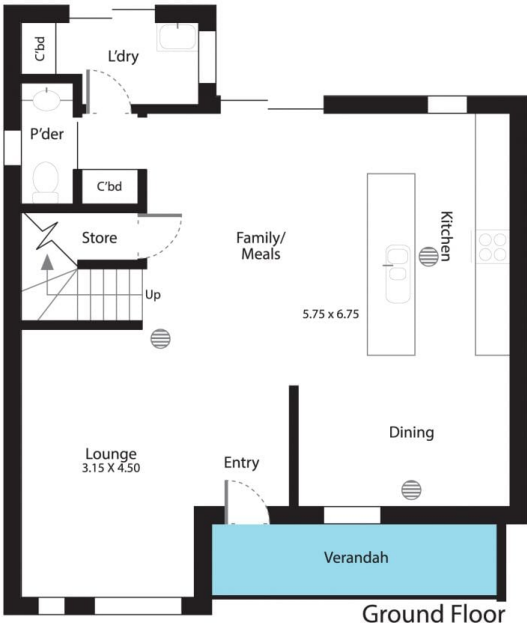
Jemma Turner
08 8366 2230

[For full version visit the website](https://www.magain.com.au)

<https://www.magain.com.au>
Magain Real Estate

Shop 60, Seaford Central Shopping Centre, Commercial Road
08 8366 2230

2/7 Konrad Street Port Noarlunga, South Australia



Picture intended as a reference only. Any specific measurements required should be obtained by an independent surveyor.