

MAGAIN



68 Kipsy Street ALDINGA BEACH SA

4  2  2 

Please contact Jemma Turner for more information, or to view the property.

Built in 2007 by Statesman Homes, this beautiful 4 bedroom, 2 living area family home, on a generous 683sqm allotment offers all the "must haves" and "I wants". Positioned amongst other gorgeous homes, in the sought after "Sunday Estate", 68 Kipsy Street is definitely one to see for yourself.

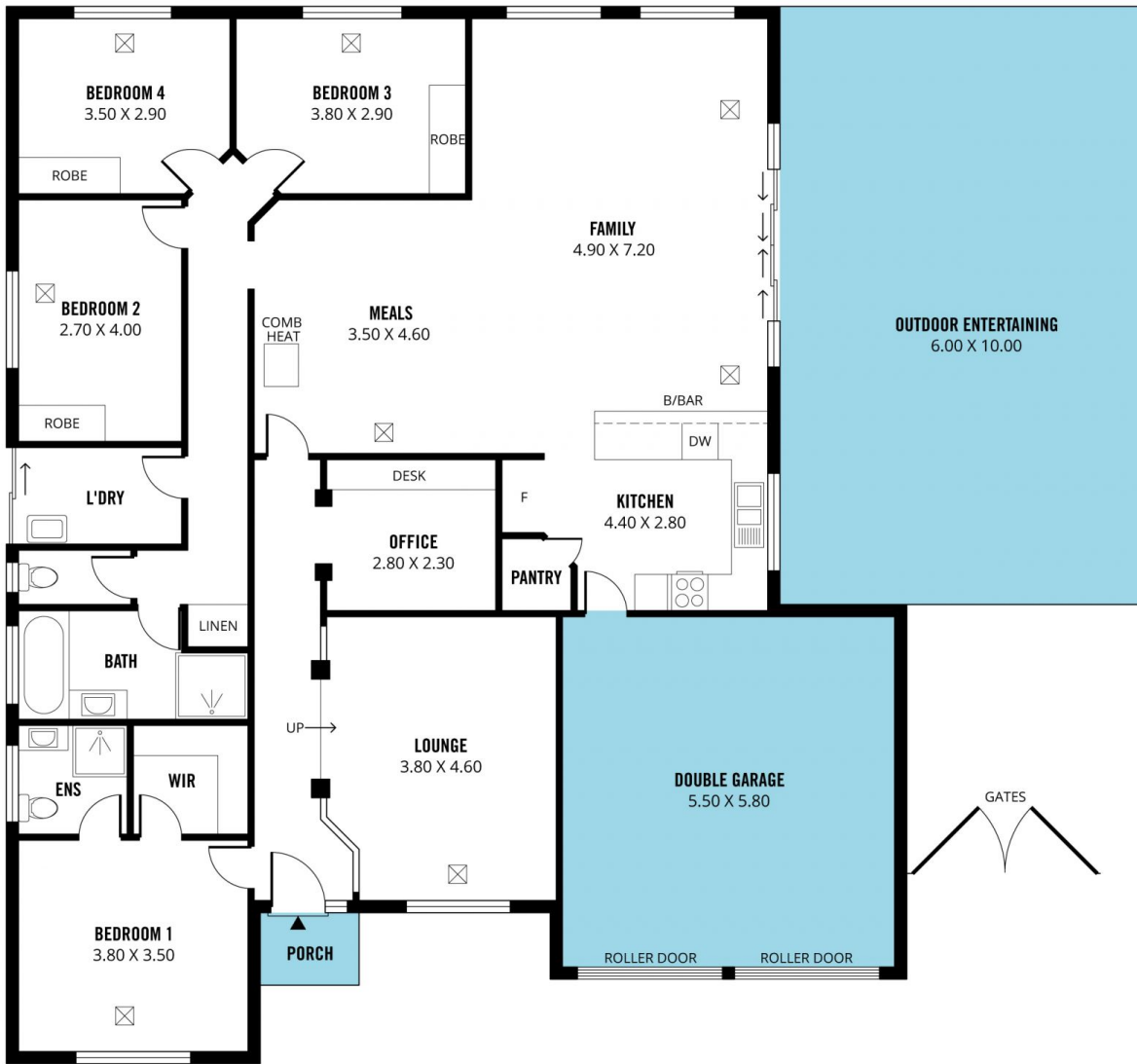
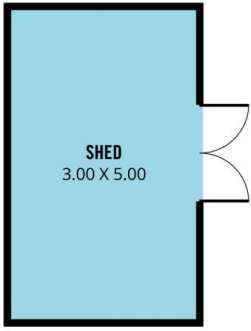
Walking distances to local reserves, playgrounds, Aldinga Conservation Park, local schools, shopping centre, cafes/restaurants and the picturesque coastline, this family home offers a quiet, yet versatile lifestyle for the growing family.

[For full version visit the website](https://www.magain.com.au/property/68-kipsy-street-aldinga-beach-sa/8433073)

Type : House
Building Size : 22 sqm
Land Size : 683 sqm
View : <https://www.magain.com.au/property/68-kipsy-street-aldinga-beach-sa/8433073>



Jemma Turner
08 8366 2230



Scale in metres. This drawing is for illustration purposes only. All measurements are approximate and details intended to be relied upon should be independently verified.

Produced by **The Fotobase Group**