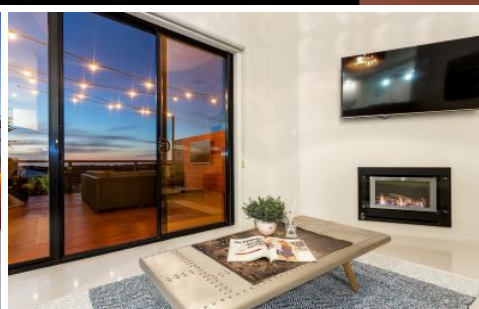
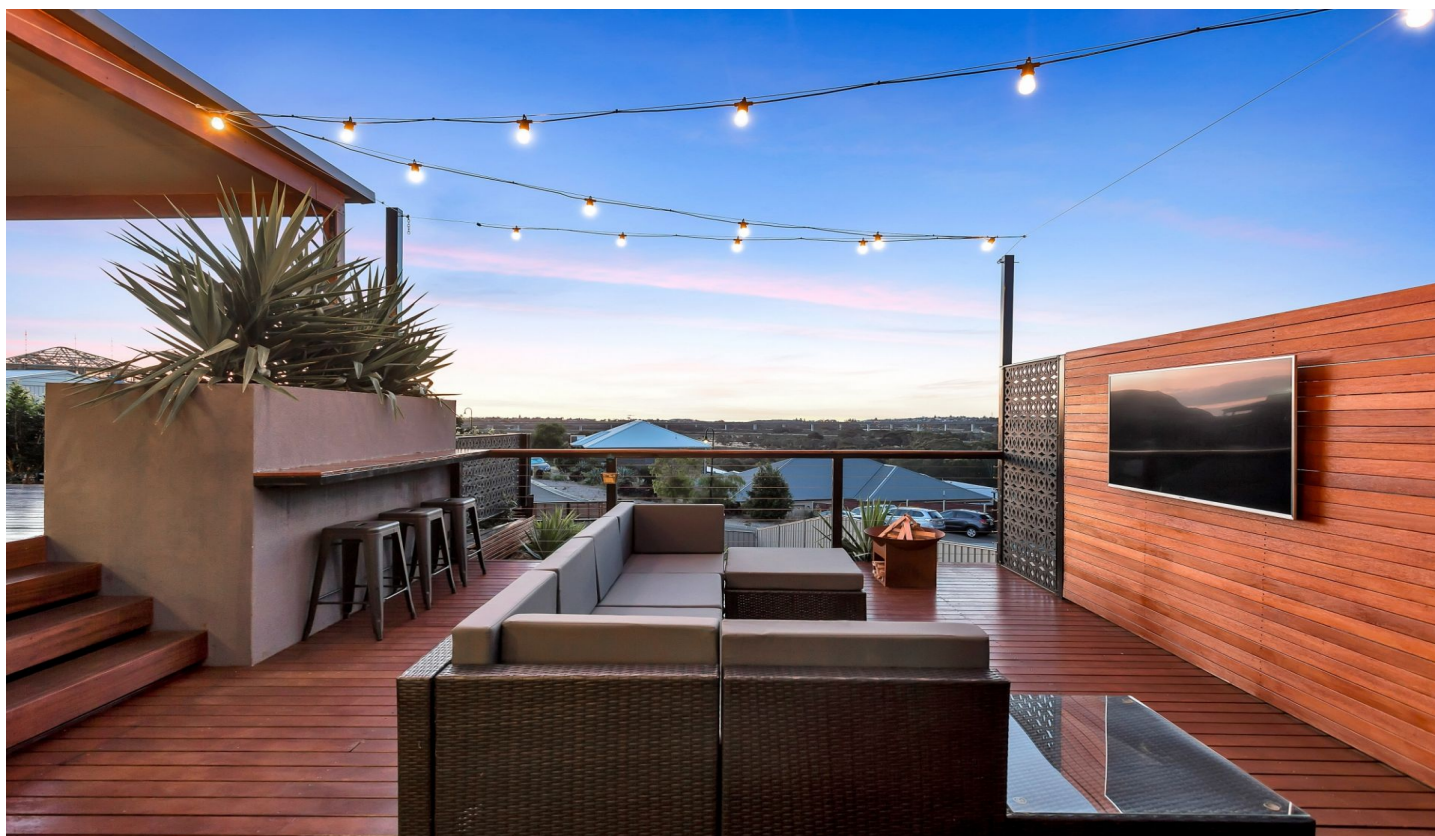


MAGAIN



19 Cascabel Way NOARLUNGA DOWNS SA

5 🛏 2 🚿 8 🚗

With magnificent views, perfectly positioned on over a quarter of an acre with dual street frontage, this exceptional executive residence is absolutely exquisite, and a credit to its creators.

Setting the benchmark in family living, the home provides enviable living standards inside, and grounds that offer unrivalled opulence when it comes to entertaining, as well as maximum versatility for family and vehicles.

Impeccable presentation & flawless decor are evident throughout the home, which includes all the class that you would expect of a construction of such quality.

Comprising 5 double bedrooms (the spacious master suite

[For full version visit the website](#)

Type : House
Building Size : 35 sqm
Land Size : 1065 sqm
View : <https://www.magain.com.au/property/19-cascabel-way-noarlunga-downs-sa/8433108>

