

MAGAIN



8 Oak Avenue CLOVELLY PARK SA

3 2 4

Stylish, spacious and built to exceptional standards, these stunning brand new homes are truly outstanding in their class - with \$15,000 first home-owner grant available!

Peacefully situated with Tonsley station less than one minute from your door, plus Westfield Marion, Flinders University & Medical Centre just moments away, your positioning could not be better for convenience, commuting or studying.

Offering almost 200sqm of living with exceptional appointments at every turn, you will marvel at exquisite finishings, large open plan living areas, 2.7m ceilings, sparkling LED downlight displays.

Type : House
Building Size : 19 sqm
Land Size : 231 sqm
View : <https://www.magain.com.au/property/8-oak-avenue-clovelly-park-sa/8433136>

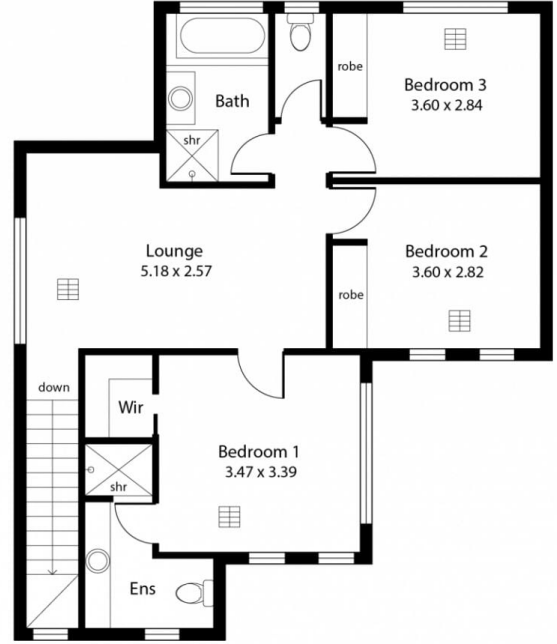
[For full version visit the website](https://www.magain.com.au)

<https://www.magain.com.au>
Magain Real Estate

Shop 60, Seaford Central Shopping Centre, Commercial Road
08 8366 2230



Lower Level



Upper Level