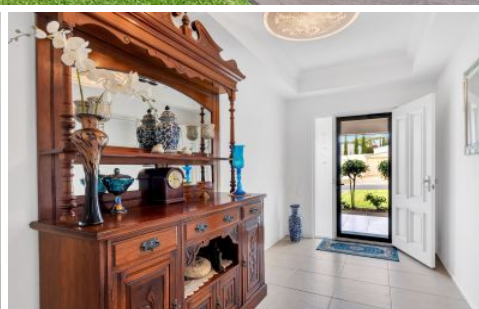


MAGAIN



2 Light Place MOUNT COMPASS SA

3  2  2 

If you appreciate the finer things in life, then this immaculately presented and maintained property should be seriously considered.

Built by Dechellis in 2011 this quality home is tucked away in a very quiet and private Cul-de-sac. It's surrounded by other quality homes in the Mount Compass Golf Course Estate which offers a fantastic lifestyle. The rendered facade, and well maintained front garden provide a strong street appeal. There is a double garage under the main roof with dual automatic roller doors with additional off street parking available.

The large tiled entrance hall boasts vaulted ceilings and impressive wall niches. The main bedroom is more like a

[For full version visit the website](https://www.magain.com.au/property/2-light-place-mount-compass-sa/8433155)

Type : House
Building Size : 26 sqm
Land Size : 865 sqm
View : <https://www.magain.com.au/property/2-light-place-mount-compass-sa/8433155>



David Hams
08 8366 2230



Scale in metres. This drawing is for illustration purposes only. All measurements are approximate and details intended to be relied upon should be independently verified.

Produced by **The Fotobase Group**