

MAGAIN



6 Syme Avenue SEACOMBE GARDENS SA

3 1 1

Superbly located court yard home with in easy access to major shopping including the Marion Shopping Centre, public transport and opposite the Stella Maris Parish School and close to the Seaview High School. Features include 3 bedrooms with main bedroom having wir and access into the two- way bathroom. All beds have ceiling fans. Open plan living at the rear with the kitchen overlooking the main living area incorporating family and dining areas. This area has a split aircon and fresh floating floors through the main traffic areas.

Sliding access to the rear that has an easy maintained yard with lawn and surrounding gardens which gives you a sense of space. The home has a central courtyard area which could be used a tranquil space to sit and relax with a

Type : House

View : <https://www.magain.com.au/property/6-syme-ave-nue-seacombe-gardens-sa/8433156>

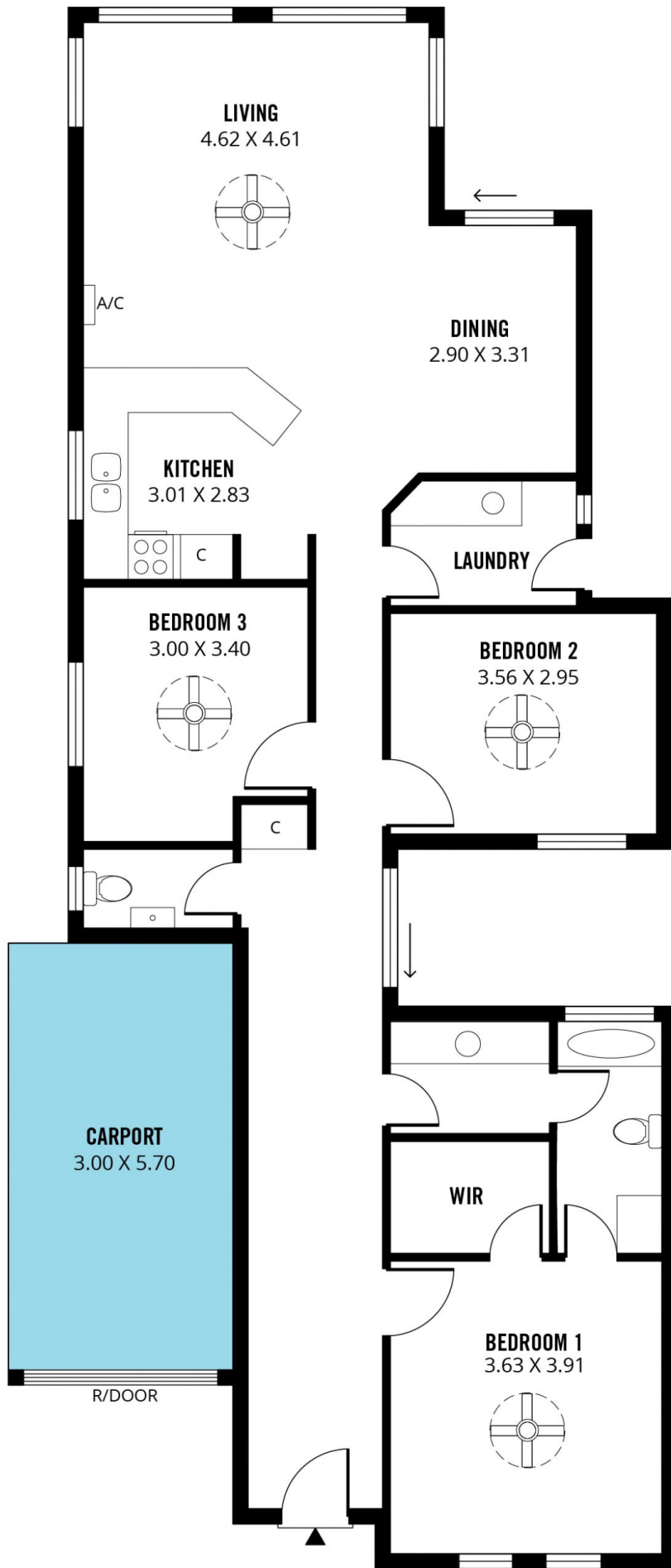


Jason Smart
08 8366 2230

[For full version visit the website](https://www.magain.com.au)

<https://www.magain.com.au>
Magain Real Estate

Shop 60, Seaford Central Shopping Centre, Commerci S
08 8366 2230



Scale in metres. This drawing is for illustration purposes only. All measurements are approximate and details intended to be relied upon should be independently verified.

Produced by **The Fotobase Group**