

# MAGAIN



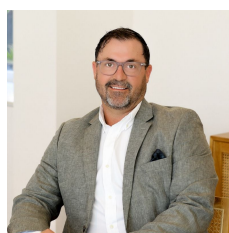
## 23 Whimbrel Circuit SEAFORD RISE SA

5 2 4

This impressive property has great street appeal and is nestled amongst other quality homes. Located on a very quiet tree lined street, with easy access to good local shopping and transport facilities, a number of Schooling options and not far from the beach.

As you step inside, the separate entrance opens into the formal lounge room and adjacent formal dining located up the front of the home. The central kitchen is very well appointed with a brand new oven, gas cook top with range hood and a dishwasher, there is a dual sink with mixer tap and good bench space. The kitchen overlooks the adjacent casual meals and large additional living or family room that has sliding door access out to the rear yard. There is another living or rumpus room located at the rear of the

**Type** : House  
**Building Size** : 23 sqm  
**Land Size** : 753 sqm  
**View** : <https://www.magain.com.au/property/23-whimbrel-circuit-seaford-rise-sa/843317>  
1

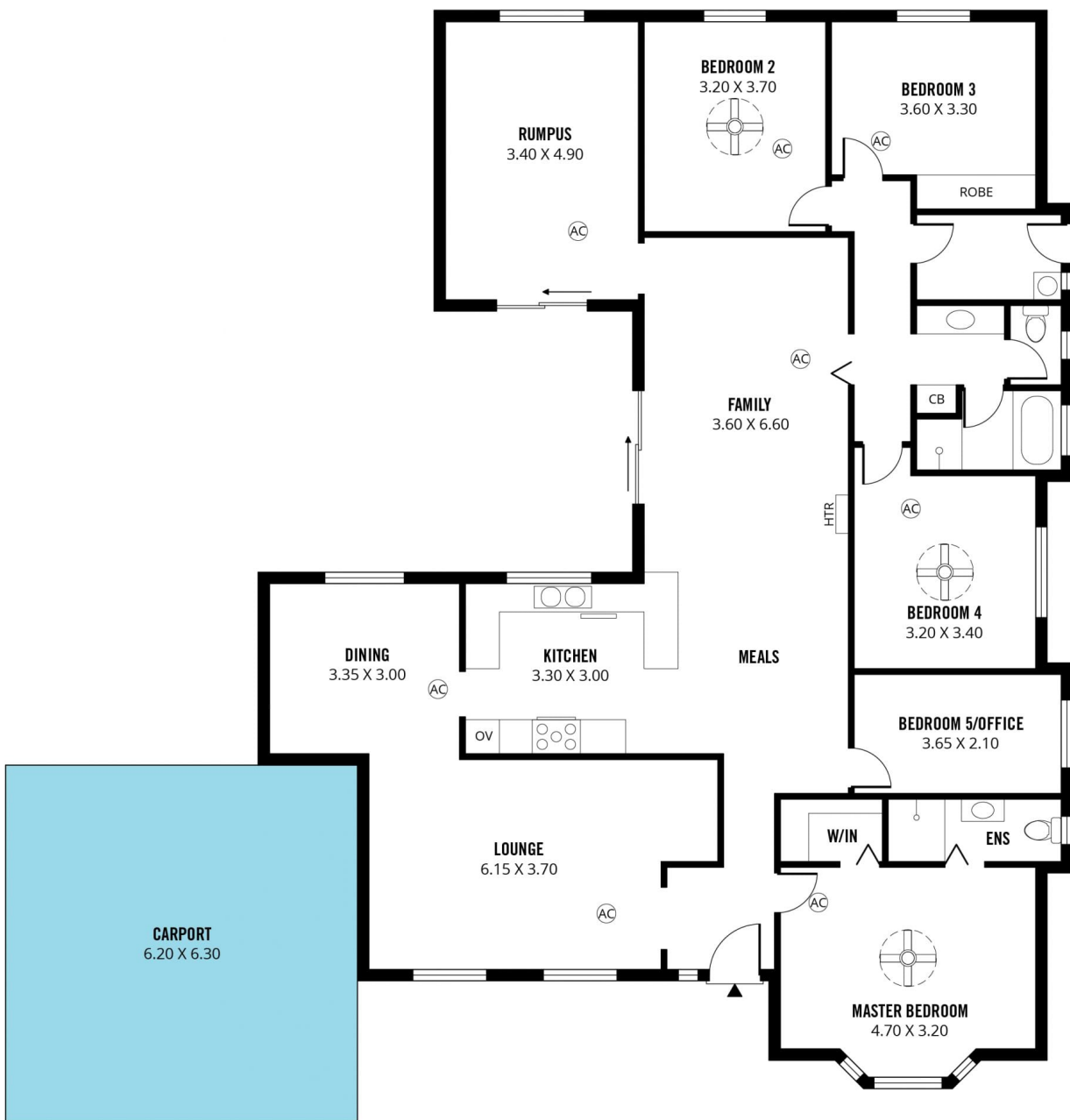
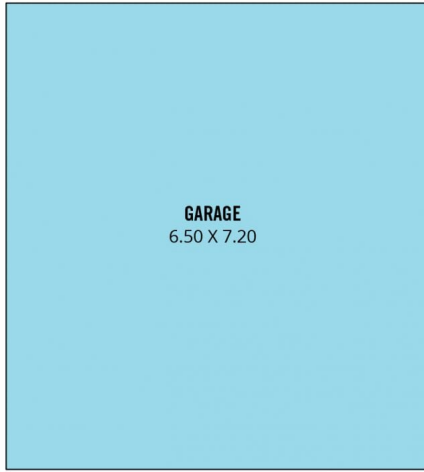


**David Hams**  
08 8366 2230

[For full version visit the website](https://www.magain.com.au)

<https://www.magain.com.au>  
Magain Real Estate

Shop 60, Seaford Central Shopping Centre, Commerci S  
08 8366 2230



Scale in metres. This drawing is for illustration purposes only. All measurements are approximate and details intended to be relied upon should be independently verified.

Produced by **The Fotobase Group**