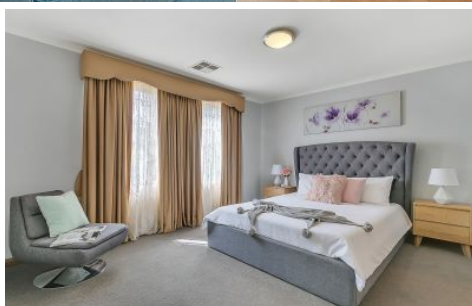


MAGAIN



1 Nina Court ABERFOYLE PARK SA

3 2 4

A delightful family residence, ideally located on a corner allotment in a peaceful cul-de-sac.

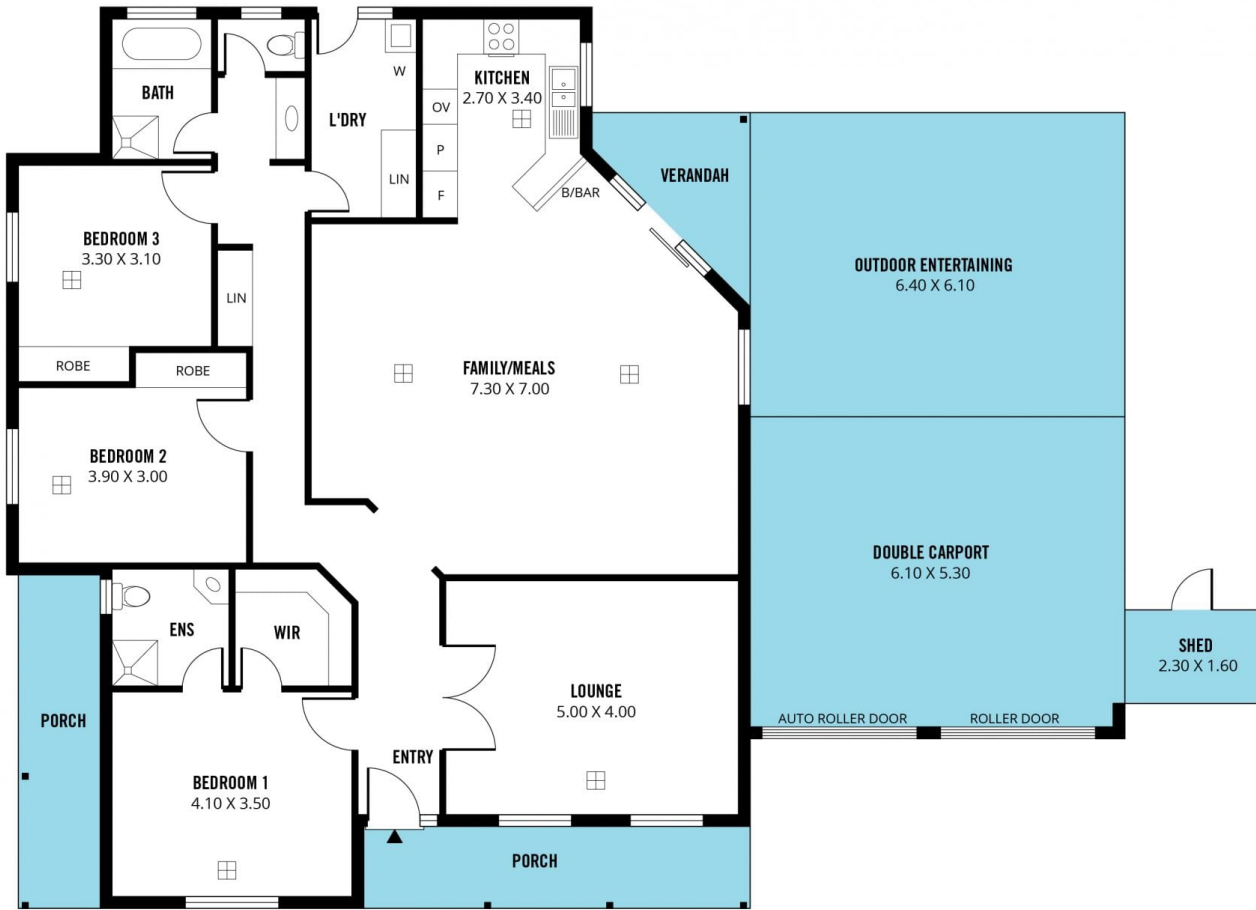
Fresh paint and recently replaced carpets grace a superb floorplan, comprising three double bedrooms, all with robes and includes a very generous master suite, complete with ensuite and walk-in robes.

At the front of the home, you will love the large formal living room with French door entry, whilst at the hub of the home, spacious formal dining area and enormous family room take centre stage, blending superbly with the tastefully updated kitchen.

From here, step out to all weather entertaining, expansive

[For full version visit the website](#)

Type : House
Building Size : 19 sqm
Land Size : 587 sqm
View : <https://www.magain.com.au/property/1-nina-court-aberfoyle-park-sa/8433201>



Scale in metres. This drawing is for illustration purposes only. All measurements are approximate and details intended to be relied upon should be independently verified.

Produced by **The Fotobase Group**