

MAGAIN



2 Wattle Court SEAFORD SA

3 2 2

Please contact Neil Cole 0438 863 911 to arrange a viewing time.

A beautifully kept home in a very quiet part of Seaford bordering a reserve. It boasts well maintained front and rear gardens with a lovely outside entertaining area flowing into the rear living area and has a double garage under the main roof.

Step inside the front door and you will be impressed, the hallway leading down to the living area is beautifully tiled and opens out to the spacious kitchen, dining and entertaining areas, all filled with natural light, and neutral colours. The living is easy with split system heating and cooling managing the temperature inside.

Type : House

View : <https://www.magain.com.au/property/2-wattle-court-seaford-sa/8433255>

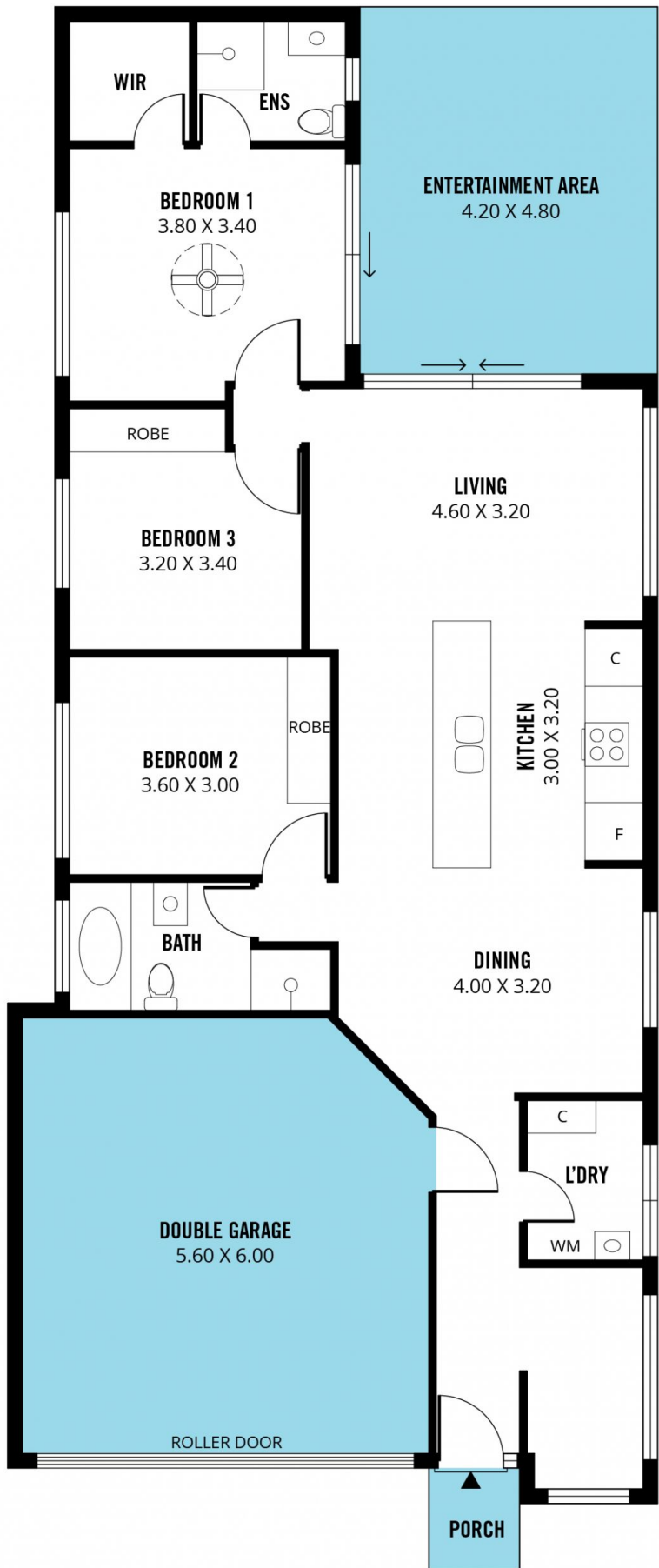


Neil Cole
08 8366 2230

[For full version visit the website](https://www.magain.com.au)

<https://www.magain.com.au>
Magain Real Estate

Shop 60, Seaford Central Shopping Centre, Commercial Road
08 8366 2230



Scale in metres. This drawing is for illustration purposes only. All measurements are approximate and details intended to be relied upon should be independently verified.

Produced by **The Fotobase Group**