

MAGAIN



4 Anderson Court MOUNT COMPASS SA

4 2 2

Please contact Jemma Turner for more information, or to view the property.

Built in 2010, this beautiful, four bedroom family home is nestled amongst other stunning homes and ideally located only a short stroll in the Mount Compass Recreation Park. Arriving at the home, you'll be instantly impressed with the neatly landscaped, yet low maintenance front yard, double garage (with internal access door), large side gate rear access and a glorious outlook towards the foothills.

Inside, the master bedroom is at the front of the home, taking in the stunning outlook through the bay window. A walk in robe and tidy ensuite bathroom complete this space. Slightly up the hall in the formal/second lounge. An

[For full version visit the website](https://www.magain.com.au/property/4-anderson-court-mount-compass-sa/8433406)

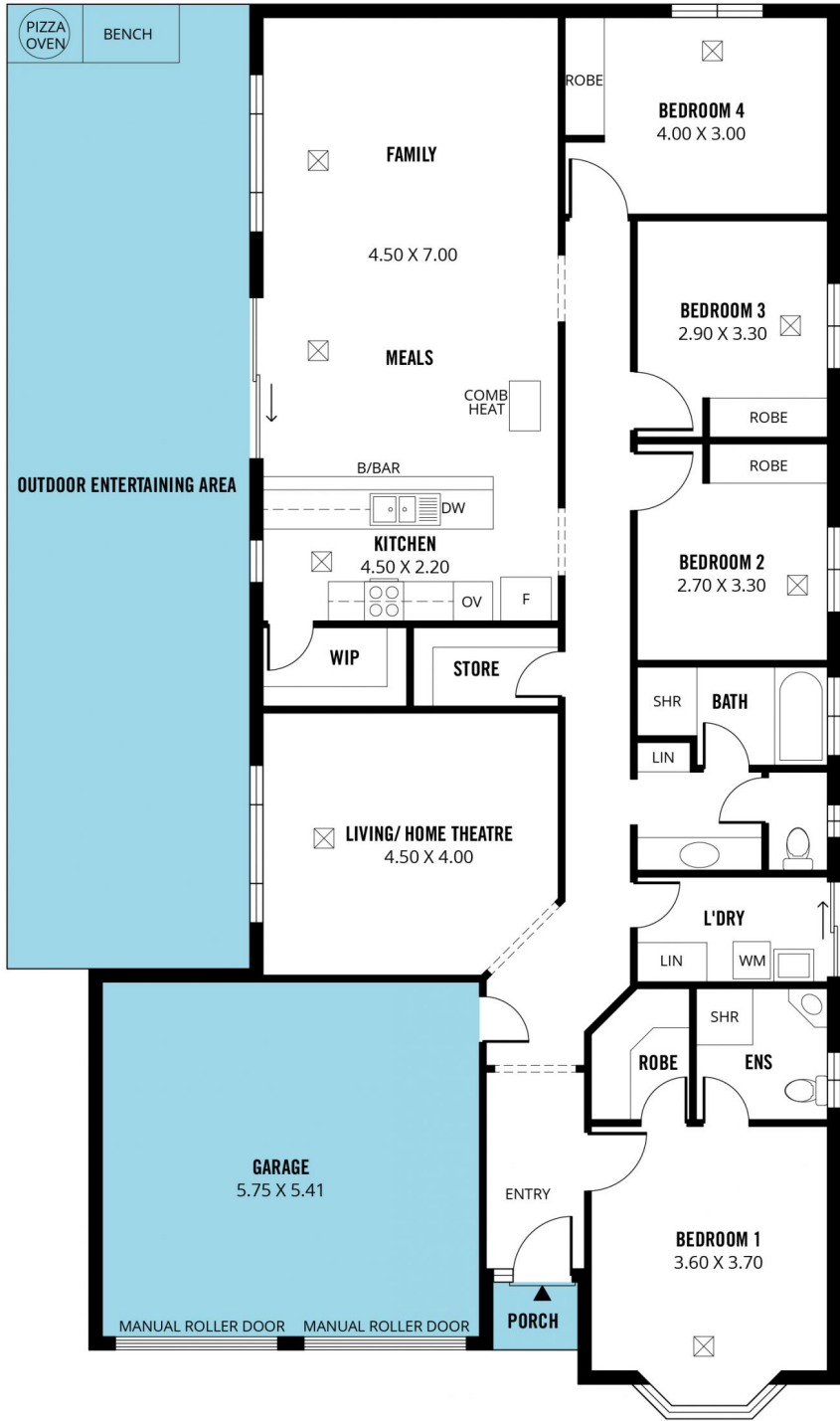
Type : House
Building Size : 16 sqm
Land Size : 598 sqm
View : <https://www.magain.com.au/property/4-anderson-court-mount-compass-sa/8433406>



Jemma Turner
08 8366 2230

SHED
2.30 X 1.40

ARBOUR
RWT



Scale in metres. This drawing is for illustration purposes only. All measurements are approximate and details intended to be relied upon should be independently verified.