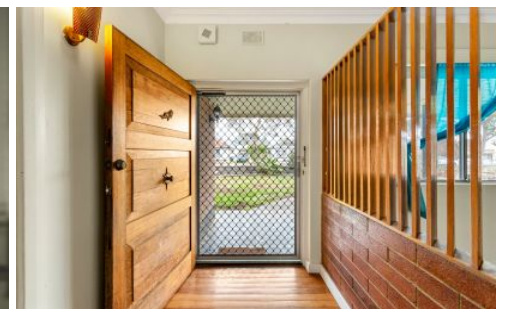


MAGAIN



11 Dorene Street ST MARYS SA

3 1 2

This solid brick 1960s family home is a beauty and has stood the test of time. The choice here is to develop (stcc) or move in and renovate, as the home is in good condition. Situated on approx 900m² of flat land with a 19.81m frontage this allotment has plenty of room to move and is in a highly desirable location.

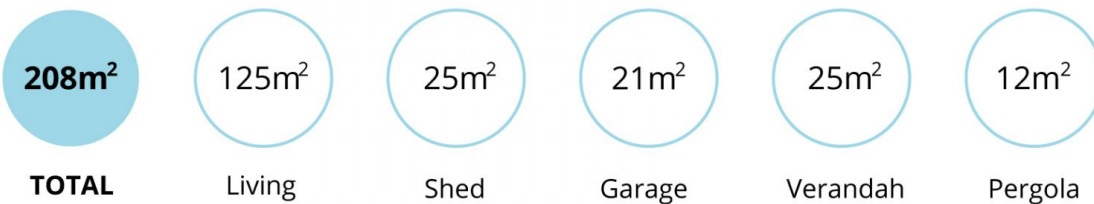
Features of the home include separate entry into formal lounge room with polished floor-boards, split system air-conditioning and ceiling fan. The kitchen is spacious in design and has a gas cooktop, range hood and plenty of storage and overlooks the dining area. 3 bedrooms all with birs and 2 have classic built in dressing tables. The bathroom floor dazzles with its original 1960 tiles which are a feature and look good in the present. Outside has a

Type : House
Land Size : 900 sqm
View : <https://www.magain.com.au/property/11-dorene-street-st-marys-sa/8433424>



Jason Smart
08 8366 2230

[For full version visit the website](https://www.magain.com.au)



Scale in metres. This drawing is for illustration purposes only. All measurements are approximate and details intended to be relied upon should be independently verified.

Produced by **The Fotobase Group**