

# MAGAIN



## 6A Ellis Street PORT NOARLUNGA SA

3  1  2 

Offering low maintenance living of the very highest standards in a fantastic position, 6A Ellis Street is both peaceful and private, with all the delights of living in Port Noarlunga just minutes from your door.

With a prized address and affordable price tag is a home offering you easy access to stunning local beaches (swim, kayak, snorkel, dive & fish), Onkaparinga River & national park, a picturesque seaside village with a variety of restaurants, whilst also being just a couple of minutes from Noarlunga Centre, train station and all other conveniences.

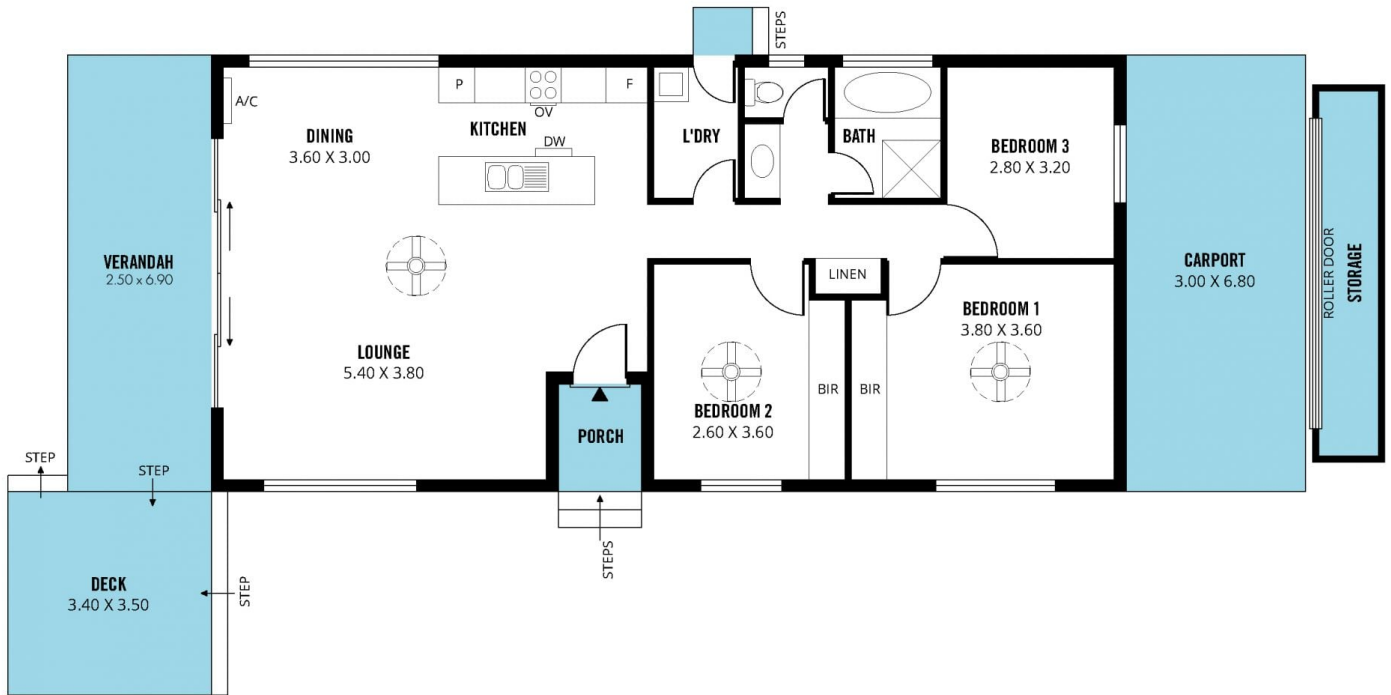
This modern & elegant three-bedroom home is discreetly hidden at the end of a private driveway and gives a glorious first impression with its delightful frontage fringed by a

**Type** : House  
**Building Size** : 16 sqm  
**Land Size** : 424 sqm  
**View** : <https://www.magain.com.au/property/6a-ellis-street-port-noarlunga-sa/8433427>

[For full version visit the website](#)

<https://www.magain.com.au>  
Magain Real Estate

Shop 60, Seaford Central Shopping Centre, Commercial Road  
08 8366 2230



Scale in metres. This drawing is for illustration purposes only. All measurements are approximate and details intended to be relied upon should be independently verified.

Produced by The Fotobase Group