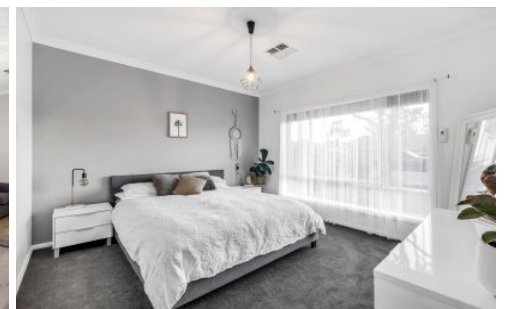





MAGAIN



27 Dover Street ALDINGA BEACH SA

3  2  2 

Please contact Jemma Turner for more information, or to view the property.

On the edge of the sought after "Sunday Estate" and located only a 2 minute walk from the stunning Aldinga Beach Esplanade and Conservation Park, 27 Dover Street offers a fabulous lifestyle and house to call home.

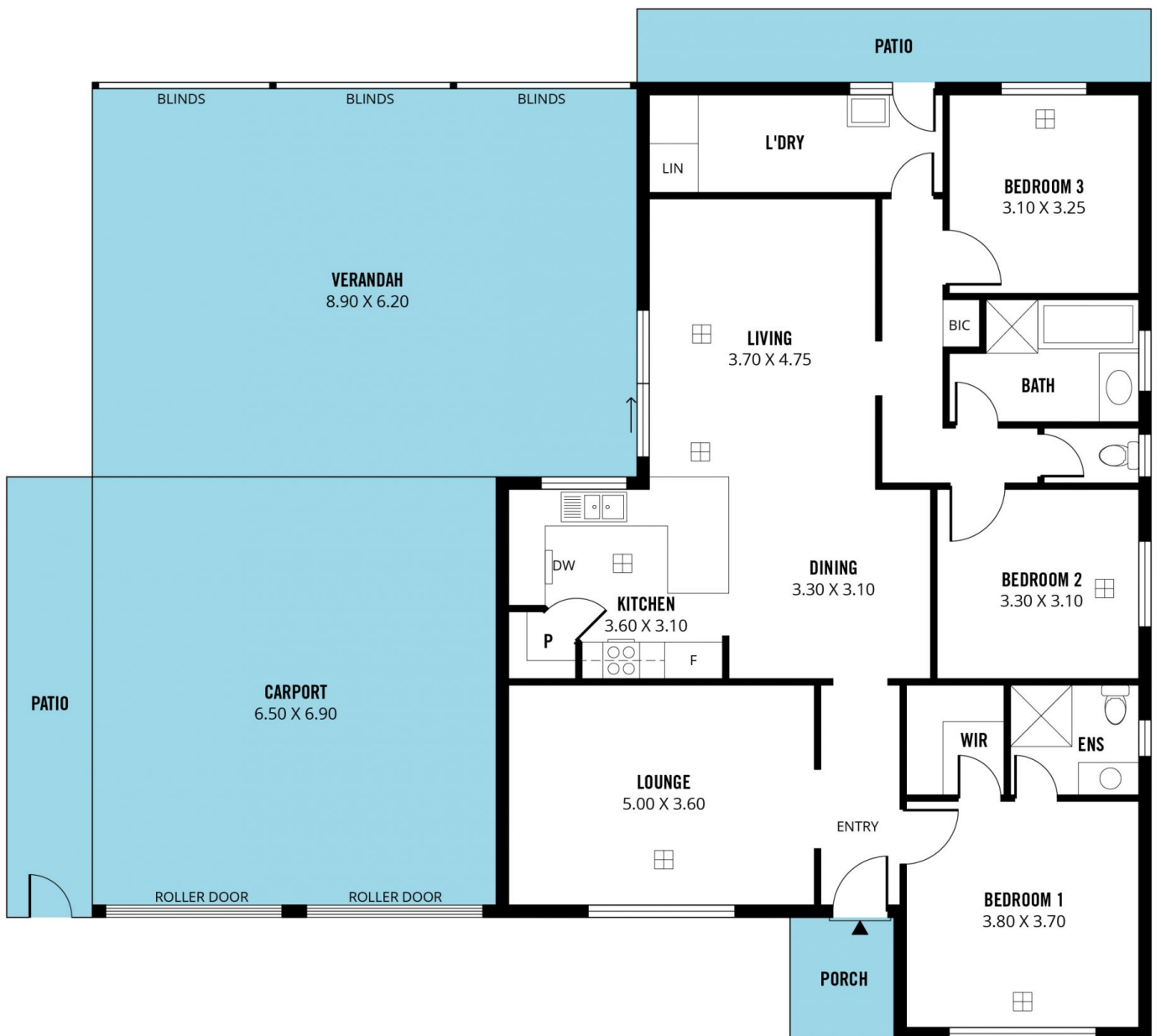
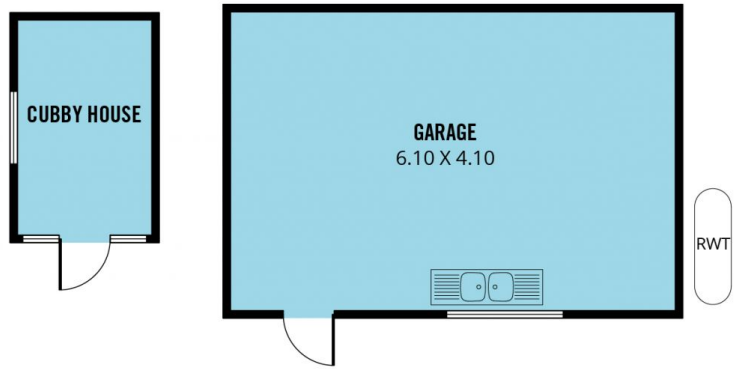
Built in 2005, this lovely 3 bedroom, 2 living area family home is on a generous 630sqm allotment and offers drive through access, through the extra high carport, to the yard if required. The current family living in this home are the proud, second owners, and have made some impressive updates to the home in the time they've lived here.

[For full version visit the website](https://www.magain.com.au/property/27-dover-street-aldinga-beach-sa/8433432)

Type : House
Building Size : 18 sqm
Land Size : 630 sqm
View : <https://www.magain.com.au/property/27-dover-street-aldinga-beach-sa/8433432>



Jemma Turner
08 8366 2230



Scale in metres. This drawing is for illustration purposes only. All measurements are approximate and details intended to be relied upon should be independently verified.

Produced by **The Fotobase Group**