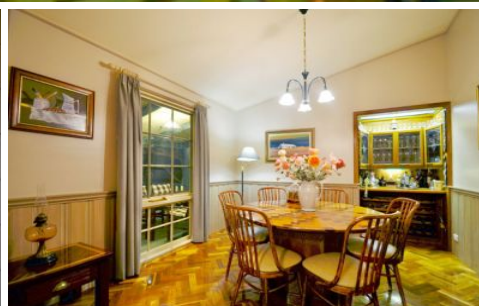
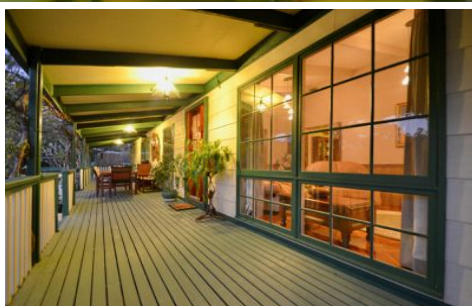


# MAGAIN



## 18 Nalya Tarn MCLAREN VALE SA

3  2  8 

Peacefully sited in the beautiful niche of Tatachilla's tree-lined acreages, this magical country home is just 2km from Tatachilla College, 5 minutes from stunning Fleurieu beaches and a few minutes from McLaren Vale's wonderful cafes and wineries.

With a first impression graced by a welcoming driveway flanked by country gardens, lawns and thriving Dovecote, you will be instantly impressed by the home's welcoming aura, its front deck taking in the magnificent grounds. The home's character and charm perfectly complements its surroundings, high ceilings and beautiful country kitchen blending superbly with formal living, family room and formal dining with elegant built-in bar.

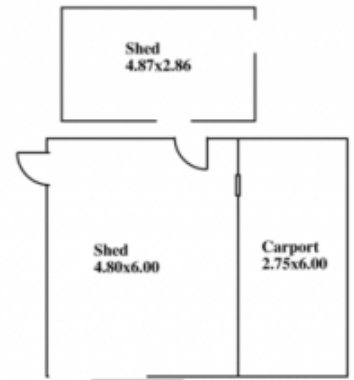
**Type** : House  
**Building Size** : 23 sqm  
**View** : <https://www.magain.com.au/property/18-nalya-tarn-mclaren-vale-sa/8433495>

[For full version visit the website](https://www.magain.com.au)

<https://www.magain.com.au>  
Magain Real Estate

Shop 60, Seaford Central Shopping Centre, Commercial Road  
08 8366 2230

# 18 Nalya Tarn, Tatachilla



ESTIMATE OF AREA  
217.99 Square metres/ 23.43 Squares  
(Including Garage UMR)

