

# MAGAIN



207 Commercial Road PORT NOARLUNGA SOUTH SA

4 1 3

Sited on a generous corner allotment of 704sqm, this four bedroom home will appeal greatly to investors and developers alike, with great potential for subdivision (STCC).

The home is situated just minutes from local schools, facilities and excellent beaches, whilst the nearby Seaford Meadows train station and Southern Expressway will ensure easy commuting.

With spacious living and family areas, and striking cathedral ceilings, the home will also cater superbly to the young family seeking four bedrooms at an alluring price - with a beach lifestyle to boot!

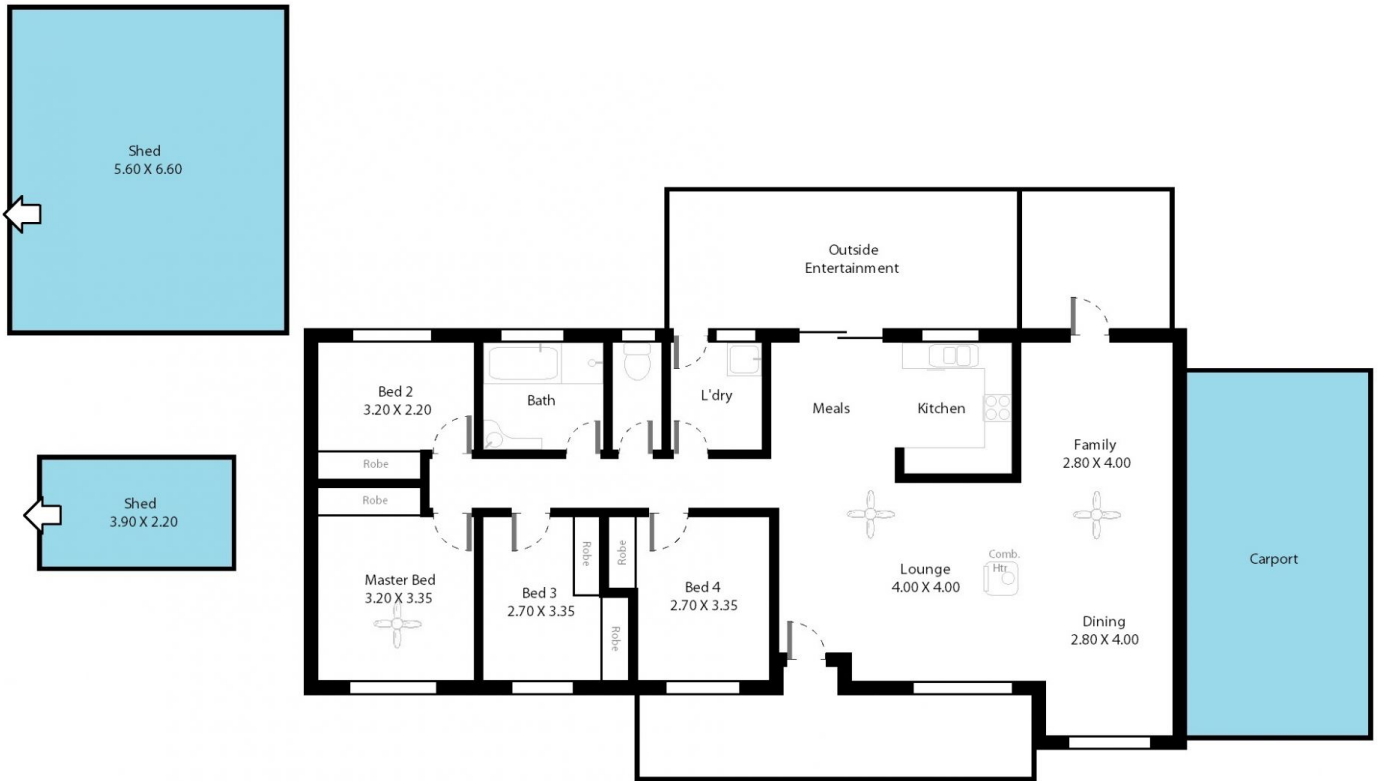
**Type** : House  
**Building Size** : 14 sqm  
**Land Size** : 704 sqm  
**View** : <https://www.magain.com.au/property/207-commercial-road-port-noarlunga-south-sa/8433591>

[For full version visit the website](https://www.magain.com.au)

<https://www.magain.com.au>  
Magain Real Estate

Shop 60, Seaford Central Shopping Centre, Commercial Road  
08 8366 2230

207 Commercial Road Port Noarlunga South, South Australia.



**Picture intended as a reference only.** Any specific measurements required should be obtained by an independent surveyor.